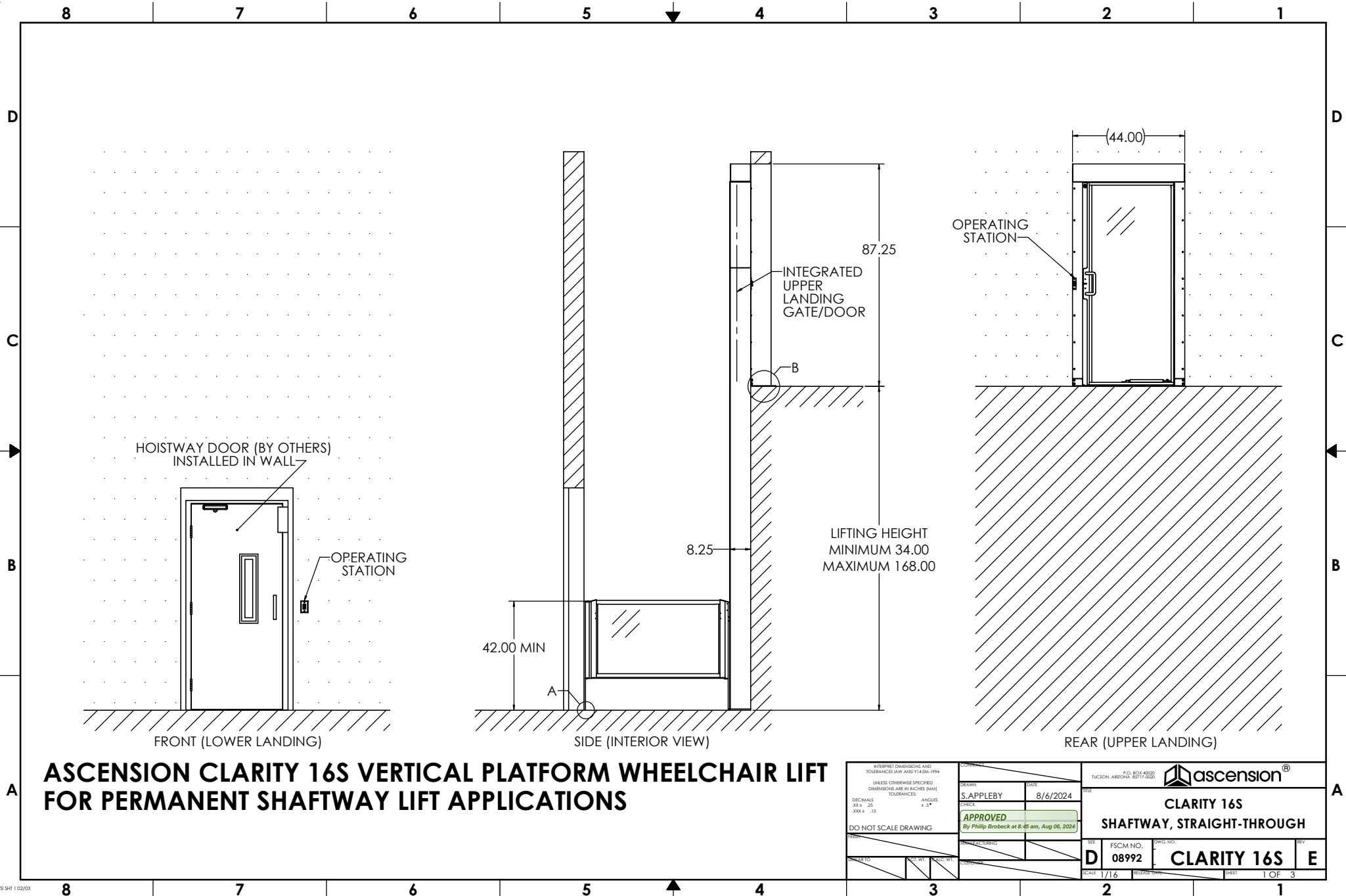
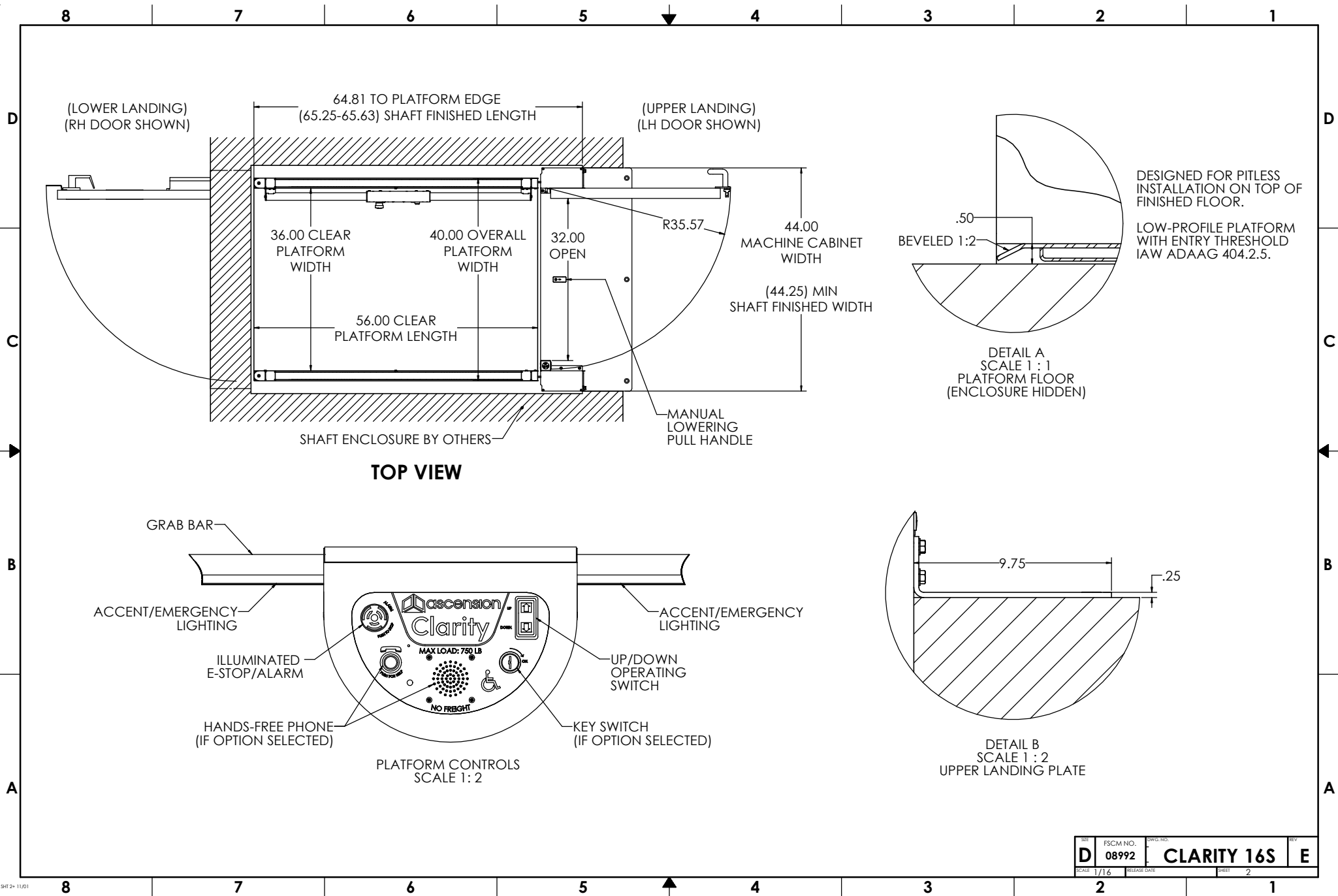


GENERIC DRAWING; CONTACT ASCENSION FOR PROJECT-SPECIFIC DRAWINGS
SEE OTHER CLARITY LIFT MODELS (16C, 16D, 16E, ETC.) FOR OTHER ENTRY/EXIT AND ENCLOSED/SHAFTWAY OPTIONS
SEE OPTIONS BROCHURE AND/OR SHEET 3 FOR VARIOUS CONFIGURATION OPTIONS



INTERPRET DIMENSIONS AND TOLERANCES (ASME Y14.5M-1994) UNLESS OTHERWISE SPECIFIED DIMENSIONS ARE IN INCHES (MM) DECIMALS .001 = .025 .005 = .125 .010 = .254 .015 = .381 .020 = .508 .030 = .762 .040 = 1.016 .050 = 1.270 .060 = 1.524 .070 = 1.778 .080 = 2.032 .090 = 2.286 .100 = 2.540 .125 = 3.175 .150 = 3.810 .175 = 4.445 .200 = 5.080 .250 = 6.350 .300 = 7.620 .350 = 8.890 .400 = 10.160 .450 = 11.430 .500 = 12.700 .562 = 14.288 .625 = 15.875 .688 = 17.464 .750 = 19.050 .812 = 20.628 .875 = 22.225 .938 = 23.813 1.000 = 25.400 1.125 = 28.575 1.250 = 31.750 1.375 = 34.925 1.500 = 38.100 1.625 = 41.275 1.750 = 44.450 1.875 = 47.625 2.000 = 50.800 2.125 = 53.975 2.250 = 57.150 2.375 = 60.325 2.500 = 63.500 2.625 = 66.675 2.750 = 69.850 2.875 = 73.025 3.000 = 76.200 3.125 = 79.375 3.250 = 82.550 3.375 = 85.725 3.500 = 88.900 3.625 = 92.075 3.750 = 95.250 3.875 = 98.425 4.000 = 101.600 4.125 = 104.775 4.250 = 107.950 4.375 = 111.125 4.500 = 114.300 4.625 = 117.475 4.750 = 120.650 4.875 = 123.825 5.000 = 127.000 5.125 = 130.175 5.250 = 133.350 5.375 = 136.525 5.500 = 139.700 5.625 = 142.875 5.750 = 146.050 5.875 = 149.225 6.000 = 152.400 6.125 = 155.575 6.250 = 158.750 6.375 = 161.925 6.500 = 165.100 6.625 = 168.275 6.750 = 171.450 6.875 = 174.625 7.000 = 177.800 7.125 = 180.975 7.250 = 184.150 7.375 = 187.325 7.500 = 190.500 7.625 = 193.675 7.750 = 196.850 7.875 = 199.925 8.000 = 203.200 8.125 = 206.375 8.250 = 209.550 8.375 = 212.725 8.500 = 215.900 8.625 = 219.075 8.750 = 222.250 8.875 = 225.425 9.000 = 228.600 9.125 = 231.775 9.250 = 234.950 9.375 = 238.125 9.500 = 241.300 9.625 = 244.475 9.750 = 247.650 9.875 = 250.825 10.000 = 254.000 10.125 = 257.175 10.250 = 260.350 10.375 = 263.525 10.500 = 266.700 10.625 = 269.875 10.750 = 273.050 10.875 = 276.225 11.000 = 279.400 11.125 = 282.575 11.250 = 285.750 11.375 = 288.925 11.500 = 292.100 11.625 = 295.275 11.750 = 298.450 11.875 = 301.625 12.000 = 304.800 12.125 = 307.975 12.250 = 311.150 12.375 = 314.325 12.500 = 317.500 12.625 = 320.675 12.750 = 323.850 12.875 = 327.025 13.000 = 330.200 13.125 = 333.375 13.250 = 336.550 13.375 = 339.725 13.500 = 342.900 13.625 = 346.075 13.750 = 349.250 13.875 = 352.425 14.000 = 355.600 14.125 = 358.775 14.250 = 361.950 14.375 = 365.125 14.500 = 368.300 14.625 = 371.475 14.750 = 374.650 14.875 = 377.825 15.000 = 381.000 15.125 = 384.175 15.250 = 387.350 15.375 = 390.525 15.500 = 393.700 15.625 = 396.875 15.750 = 399.925 15.875 = 403.075 16.000 = 406.200 16.125 = 409.375 16.250 = 412.550 16.375 = 415.725 16.500 = 418.900 16.625 = 422.075 16.750 = 425.250 16.875 = 428.425 17.000 = 431.600 17.125 = 434.775 17.250 = 437.950 17.375 = 441.125 17.500 = 444.300 17.625 = 447.475 17.750 = 450.650 17.875 = 453.825 18.000 = 457.000 18.125 = 460.175 18.250 = 463.350 18.375 = 466.525 18.500 = 469.700 18.625 = 472.875 18.750 = 476.050 18.875 = 479.225 19.000 = 482.400 19.125 = 485.575 19.250 = 488.750 19.375 = 491.925 19.500 = 495.100 19.625 = 498.275 19.750 = 501.450 19.875 = 504.625 20.000 = 507.800 20.125 = 510.975 20.250 = 514.150 20.375 = 517.325 20.500 = 520.500 20.625 = 523.675 20.750 = 526.850 20.875 = 530.025 21.000 = 533.200 21.125 = 536.375 21.250 = 539.550 21.375 = 542.725 21.500 = 545.900 21.625 = 549.075 21.750 = 552.250 21.875 = 555.425 22.000 = 558.600 22.125 = 561.775 22.250 = 564.950 22.375 = 568.125 22.500 = 571.300 22.625 = 574.475 22.750 = 577.650 22.875 = 580.825 23.000 = 584.000 23.125 = 587.175 23.250 = 590.350 23.375 = 593.525 23.500 = 596.700 23.625 = 599.875 23.750 = 603.050 23.875 = 606.225 24.000 = 609.400 24.125 = 612.575 24.250 = 615.750 24.375 = 618.925 24.500 = 622.100 24.625 = 625.275 24.750 = 628.450 24.875 = 631.625 25.000 = 634.800 25.125 = 637.975 25.250 = 641.150 25.375 = 644.325 25.500 = 647.500 25.625 = 650.675 25.750 = 653.850 25.875 = 657.025 26.000 = 660.200 26.125 = 663.375 26.250 = 666.550 26.375 = 669.725 26.500 = 672.900 26.625 = 676.075 26.750 = 679.250 26.875 = 682.425 27.000 = 685.600 27.125 = 688.775 27.250 = 691.950 27.375 = 695.125 27.500 = 698.300 27.625 = 701.475 27.750 = 704.650 27.875 = 707.825 28.000 = 711.000 28.125 = 714.175 28.250 = 717.350 28.375 = 720.525 28.500 = 723.700 28.625 = 726.875 28.750 = 730.050 28.875 = 733.225 29.000 = 736.400 29.125 = 739.575 29.250 = 742.750 29.375 = 745.925 29.500 = 749.100 29.625 = 752.275 29.750 = 755.450 29.875 = 758.625 30.000 = 761.800 30.125 = 764.975 30.250 = 768.150 30.375 = 771.325 30.500 = 774.500 30.625 = 777.675 30.750 = 780.850 30.875 = 784.025 31.000 = 787.200 31.125 = 790.375 31.250 = 793.550 31.375 = 796.725 31.500 = 799.900 31.625 = 803.075 31.750 = 806.250 31.875 = 809.425 32.000 = 812.600 32.125 = 815.775 32.250 = 818.950 32.375 = 822.125 32.500 = 825.300 32.625 = 828.475 32.750 = 831.650 32.875 = 834.825 33.000 = 838.000 33.125 = 841.175 33.250 = 844.350 33.375 = 847.525 33.500 = 850.700 33.625 = 853.875 33.750 = 857.050 33.875 = 860.225 34.000 = 863.400 34.125 = 866.575 34.250 = 869.750 34.375 = 872.925 34.500 = 876.100 34.625 = 879.275 34.750 = 882.450 34.875 = 885.625 35.000 = 888.800 35.125 = 891.975 35.250 = 895.150 35.375 = 898.325 35.500 = 901.500 35.625 = 904.675 35.750 = 907.850 35.875 = 911.025 36.000 = 914.200 36.125 = 917.375 36.250 = 920.550 36.375 = 923.725 36.500 = 926.900 36.625 = 930.075 36.750 = 933.250 36.875 = 936.425 37.000 = 939.600 37.125 = 942.775 37.250 = 945.950 37.375 = 949.125 37.500 = 952.300 37.625 = 955.475 37.750 = 958.650 37.875 = 961.825 38.000 = 965.000 38.125 = 968.175 38.250 = 971.350 38.375 = 974.525 38.500 = 977.700 38.625 = 980.875 38.750 = 984.050 38.875 = 987.225 39.000 = 990.400 39.125 = 993.575 39.250 = 996.750 39.375 = 999.925 40.000 = 1016.000 40.125 = 1019.175 40.250 = 1022.350 40.375 = 1025.525 40.500 = 1028.700 40.625 = 1031.875 40.750 = 1035.050 40.875 = 1038.225 41.000 = 1041.400 41.125 = 1044.575 41.250 = 1047.750 41.375 = 1050.925 41.500 = 1054.100 41.625 = 1057.275 41.750 = 1060.450 41.875 = 1063.625 42.000 = 1066.800 42.125 = 1069.975 42.250 = 1073.150 42.375 = 1076.325 42.500 = 1079.500 42.625 = 1082.675 42.750 = 1085.850 42.875 = 1089.025 43.000 = 1092.200 43.125 = 1095.375 43.250 = 1098.550 43.375 = 1101.725 43.500 = 1104.900 43.625 = 1108.075 43.750 = 1111.250 43.875 = 1114.425 44.000 = 1117.600 44.125 = 1120.775 44.250 = 1123.950 44.375 = 1127.125 44.500 = 1130.300 44.625 = 1133.475 44.750 = 1136.650 44.875 = 1139.825 45.000 = 1143.000 45.125 = 1146.175 45.250 = 1149.350 45.375 = 1152.525 45.500 = 1155.700 45.625 = 1158.875 45.750 = 1162.050 45.875 = 1165.225 46.000 = 1168.400 46.125 = 1171.575 46.250 = 1174.750 46.375 = 1177.925 46.500 = 1181.100 46.625 = 1184.275 46.750 = 1187.450 46.875 = 1190.625 47.000 = 1193.800 47.125 = 1196.975 47.250 = 1200.150 47.375 = 1203.325 47.500 = 1206.500 47.625 = 1209.675 47.750 = 1212.850 47.875 = 1216.025 48.000 = 1219.200 48.125 = 1222.375 48.250 = 1225.550 48.375 = 1228.725 48.500 = 1231.900 48.625 = 1235.075 48.750 = 1238.250 48.875 = 1241.425 49.000 = 1244.600 49.125 = 1247.775 49.250 = 1250.950 49.375 = 1254.125 49.500 = 1257.300 49.625 = 1260.475 49.750 = 1263.650 49.875 = 1266.825 50.000 = 1270.000 50.125 = 1273.175 50.250 = 1276.350 50.375 = 1279.525 50.500 = 1282.700 50.625 = 1285.875 50.750 = 1289.050 50.875 = 1292.225 51.000 = 1295.400 51.125 = 1298.575 51.250 = 1301.750 51.375 = 1304.925 51.500 = 1308.100 51.625 = 1311.275 51.750 = 1314.450 51.875 = 1317.625 52.000 = 1320.800 52.125 = 1323.975 52.250 = 1327.150 52.375 = 1330.325 52.500 = 1333.500 52.625 = 1336.675 52.750 = 1339.850 52.875 = 1343.025 53.000 = 1346.200 53.125 = 1349.375 53.250 = 1352.550 53.375 = 1355.725 53.500 = 1358.900 53.625 = 1362.075 53.750 = 1365.250 53.875 = 1368.425 54.000 = 1371.600 54.125 = 1374.775 54.250 = 1377.950 54.375 = 1381.125 54.500 = 1384.300 54.625 = 1387.475 54.750 = 1390.650 54.875 = 1393.825 55.000 = 1397.000 55.125 = 1400.175 55.250 = 1403.350 55.375 = 1406.525 55.500 = 1409.700 55.625 = 1412.875 55.750 = 1416.050 55.875 = 1419.225 56.000 = 1422.400 56.125 = 1425.575 56.250 = 1428.750 56.375 = 1431.925 56.500 = 1435.100 56.625 = 1438.275 56.750 = 1441.450 56.875 = 1444.625 57.000 = 1447.800 57.125 = 1450.975 57.250 = 1454.150 57.375 = 1457.325 57.500 = 1460.500 57.625 = 1463.675 57.750 = 1466.850 57.875 = 1470.025 58.000 = 1473.200 58.125 = 1476.375 58.250 = 1479.550 58.375 = 1482.725 58.500 = 1485.900 58.625 = 1489.075 58.750 = 1492.250 58.875 = 1495.425 59.000 = 1498.600 59.125 = 1501.775 59.250 = 1504.950 59.375 = 1508.125 59.500 = 1511.300 59.625 = 1514.475 59.750 = 1517.650 59.875 = 1520.825 60.000 = 1524.000 60.125 = 1527.175 60.250 = 1530.350 60.375 = 1533.525 60.500 = 1536.700 60.625 = 1539.875 60.750 = 1543.050 60.875 = 1546.225 61.000 = 1549.400 61.125 = 1552.575 61.250 = 1555.750 61.375 = 1558.925 61.500 = 1562.100 61.625 = 1565.275 61.750 = 1568.450 61.875 = 1571.625 62.000 = 1574.800 62.125 = 1577.975 62.250 = 1581.150 62.375 = 1584.325 62.500 = 1587.500 62.625 = 1590.675 62.750 = 1593.850 62.875 = 1597.025 63.000 = 1600.200 63.125 = 1603.375 63.250 = 1606.550 63.375 = 1609.725 63.500 = 1612.900 63.625 = 1616.075 63.750 = 1619.250 63.875 = 1622.425 64.000 = 1625.600 64.125 = 1628.775 64.250 = 1631.950 64.375 = 1635.125 64.500 = 1638.300 64.625 = 1641.475 64.750 = 1644.650 64.875 = 1647.825 65.000 = 1651.000 65.125 = 1654.175 65.250 = 1657.350 65.375 = 1660.525 65.500 = 1663.700 65.625 = 1666.875 65.750 = 1670.050 65.875 = 1673.225 66.000 = 1676.400 66.125 = 1679.575 66.250 = 1682.750 66.375 = 1685.925 66.500 = 1689.100 66.625 = 1692.275 66.750 = 1695.450 66.875 = 1698.625 67.000 = 1701.800 67.125 = 1704.975 67.250 = 1708.150 67.375 = 1711.325 67.500 = 1714.500 67.625 = 1717.675 67.750 = 1720.850 67.875 = 1724.025 68.000 = 1727.200 68.125 = 1730.375 68.250 = 1733.550 68.375 = 1736.725 68.500 = 1739.900 68.625 = 1743.075 68.750 = 1746.250 68.875 = 1749.425 69.000 = 1752.600 69.125 = 1755.775 69.250 = 1758.950 69.375 = 1762.125 69.500 = 1765.300 69.625 = 1768.475 69.750 = 1771.650 69.875 = 1774.825 70.000 = 1778.000 70.125 = 1781.175 70.250 = 1784.350 70.375 = 1787.525 70.500 = 1790.700 70.625 = 1793.875 70.750 = 1797.050 70.875 = 1800.225 71.000 = 1803.400 71.125 = 1806.575 71.250 = 1809.750 71.375 = 1812.925 71.500 = 1816.100 71.625 = 1819.275 71.750 = 1822.450 71.875 = 1825.625 72.000 = 1828.800 72.125 = 1831.975 72.250 = 1835.150 72.375 = 1838.325 72.500 = 1841.500 72.625 = 1844.675 72.750 = 1847.850 72.875 = 1851.025 73.000 = 1854.200 73.125 = 1857.375 73.250 = 1860.550 73.375 = 1863.725 73.500 = 1866.900 73.625 = 1870.075 73.750 = 1873.250 73.875 = 1876.425 74.000 = 1879.600 74.125 = 1882.775 74.250 = 1885.950 74.375 = 1889.125 74.500 = 1892.300 74.625 = 1895.475 74.750 = 1898.650 74.875 = 1901.825 75.000 = 1905.000 75.125 = 1908.175 75.250 = 1911.350 75.375 = 1914.525 75.500 = 1917.700 75.625 = 1920.875 75.750 = 1924.050 75.875 = 1927.225 76.000 = 1930.400 76.125 = 1933.575 76.250 = 1936.750 76.375 = 1939.925 76.500 = 1943.100 76.625 = 1946.275 76.750 = 1949.450 76.875 = 1952.625 77.000 = 1955.800 77.125 = 1958.975 77.250 = 1962.150 77.375 = 1965.325 77.500 = 1968.500 77.625 = 1971.675 77.750 = 1974.850 77.875 = 1978.025 78.000 = 1981.200 78.125 = 1984.375 78.250 = 1987.550 78.375 = 1990.725 78.500 = 1993.900 78.625 = 1997.075 78.750 = 2000.250 78.875 = 2003.425 79.000 = 2006.600 79.125 = 2009.775 79.250 = 2012.950 79.375 = 2016.125 79.500 = 2019.300 79.625 = 2022.475 79.750 = 2025.650 79.875 = 2028.825 80.000 = 2032.000 80.125 = 2035.175 80.250 = 2038.350 80.375 = 2041.525 80.500 = 2044.700 80.625 = 2047.875 80.750 = 2051.050 80.875 = 2054.225 81.000 = 2057.400 81.125 = 2060.575 81.250 = 2063.750 81.375 = 2066.925 81.500 = 2070.100 81.625 = 2073.275 81.750 = 2076.450 81.875 = 2079.625 82.000 = 2082.800 82.125 = 2085.975 82.250 = 2089.150 82.375 = 2092.325 82.500 = 2095.500 82.625 = 2098.675 82.750 = 2101.850 82.875 = 2105.025 83.000 = 2108.200 83.125 = 2111.375 83.250 = 2114.550 83.375 = 2117.725 83.500 = 2120.900 83.625 = 2124.075 83.750 = 2127.250 83.875 = 2130.425 84.000 = 2133.600 84.125 = 2136.775 84.250 = 2139.950 84.375 = 2143.125 84.500 = 2146.300 84.625 = 2149.475 84.750 = 2152.650 84.875 = 2155.825 85.000 = 2159.000 85.125 = 2162.175 85.250 = 2165.350 85.375 = 2168.525 85.500 = 2171.700 85.625 = 2174.875 85.750 = 2178.050 85.875 = 2181.225 86.000 = 2184.400 86.125 = 2187.575 86.250 = 2190.750 86.375 = 2193.925 86.500 = 2197.100 86.625 = 2200.275 86.750 = 2203.450 86.875 = 2206.625 87.000 = 2209.800 87.125 = 2212.975 87.250 = 2216.150 87.375 = 2219.325 87.500 = 2222.500 87.625 = 2225.675 87.750 = 2228.850 87.875 = 2232.025 88.000 = 2235.200 88.125 = 2238.375 88.250 = 2241.550 88.375 = 2244.725 88.500 = 2247.900 88.625 = 2251.075 88.750 = 2254.250 88.875 = 2257.425 89.
--



REV	PSCM NO.	DWG. NO.	REV
D	08992	CLARITY 16S	E
SCALE 1/16	RELEASE DATE	SHEET 2	

CONFIGURATION

TOTAL TRAVEL	34" TO 168"
ENTRY/EXIT CONFIG.	STRAIGHT THROUGH
ENCLOSURE PROVIDED	NONE (BY OTHERS)

CLARITY LOADING - OPPOSING ENTRY & EXIT (16E, 16S)

(GENERIC APPLICATION DEPICTED; ENCLOSURE NOT SHOWN)

MACHINE CABINET ANCHORS				
ANCHORING REQUIREMENT	ANCHOR LOCATION* (±.38) [IN]	# OF ANCHORS	TYPE (NEXT SHEETS)	APPLICABILITY
ANCHOR AT ONE OF TOP LOCATIONS.	UPPER F.F.	3	A	CONCRETE LANDING
	1" BELOW	6	B	WOOD LANDING
OPTIONAL (USE OF OPTIONAL ANCHORS RECOMMENDED FOR MAXIMUM RIGIDITY)	145.50	2	C	TRAVEL > 148.5"
	121.50			TRAVEL > 124.5"
	97.50			TRAVEL > 100.5"
	73.50			TRAVEL > 76.5"
	49.50			TRAVEL > 52.5"
	25.50			ALL LIFTS
ANCHOR AT ONE OF BOTTOM LOCATIONS	6.00	2	C	ALL LIFTS
	LOWER F.F.	2	D	H.L. PKG ONLY
ENCLOSURE ANCHORS (16E MODEL ONLY)				
REQUIRED IF PRESENT	LOWER F.F.	2	F	16E ONLY

* ACTUAL LOCATIONS OF WALL ANCHORS MAY VARY AS MUCH AS ±3/8" FROM VALUES GIVEN ABOVE. MOUNTING STRUCTURE MUST BE ABLE TO ACCOMMODATE THIS VARIABILITY.

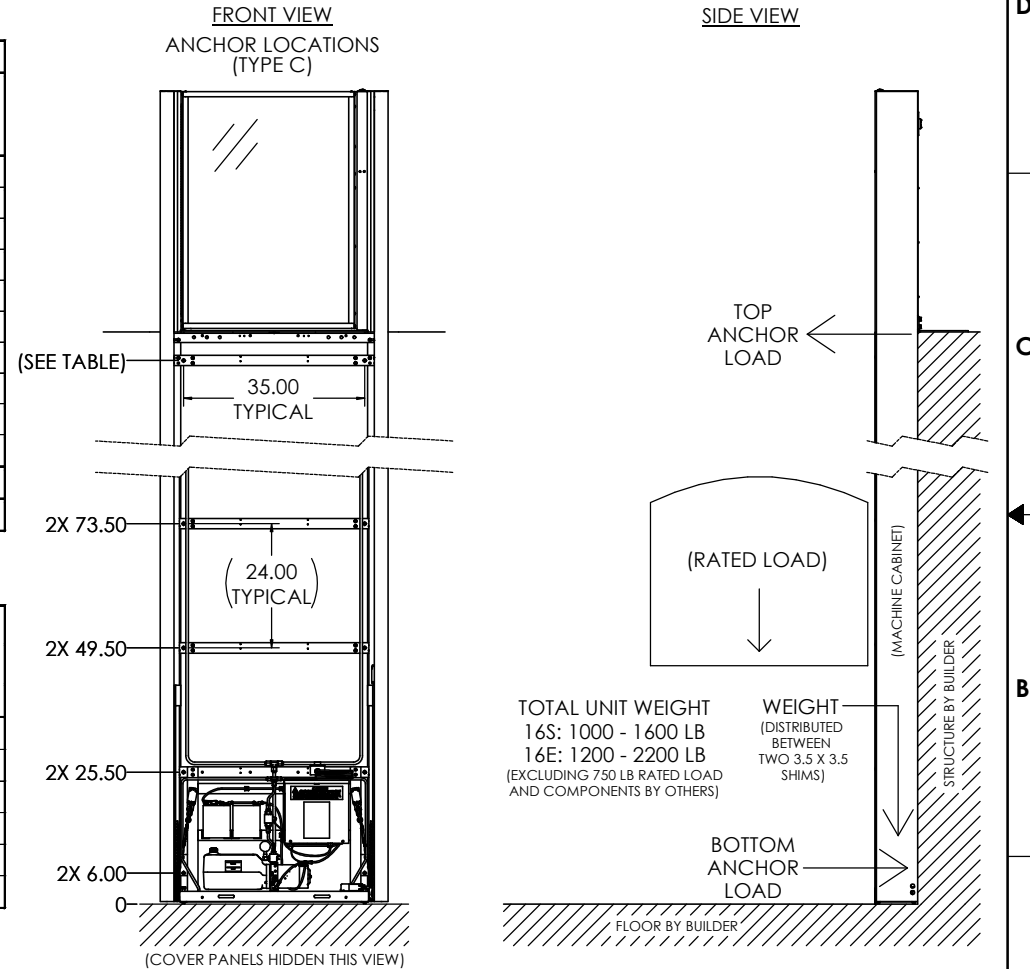
MAX LOAD <u>PER ANCHOR</u> BY TRAVEL HEIGHT [LBF]**							MAX TOTAL HORIZONTAL LOAD [LBF]** (FORCE ON STRUCTURE)
		ANCHOR TYPE <small>(SEE TABLE ABOVE)</small>					
		A	B	C	D	F	
TRAVEL	34.0 – 52.5	623	SPECIAL†	970	793	200	2050
	52.5 – 76.5	375	192	575	508	200	1275
	76.5 – 100.5	248	126	377	347	200	875
	100.5 – 124.5	185	93	280	263	200	700
	124.5 – 148.5	147	74	223	212	200	575
	148.5 – 168.0	123	62	185	178	200	500

** LOADS LISTED ASSUME STATIC LOADING AND DO NOT INCLUDE WIND, SEISMIC, OR SAFETY FACTOR.

† WHEN USED, REQUIRES 6X TYPE B ANCHORS WITH 289 LBF MAX LOAD, 2X TYPE C ANCHORS AT 49.50 LOCATION WITH 189 LBF MAX LOAD, AND ANCHORING AT ONE OF THE BOTTOM LOCATIONS.

ADDITIONAL NOTES:

1. ANCHORS PROVIDED BY ASCENSION FOR COMMON MOUNTING APPLICATIONS.
(SEE NEXT SHEETS FOR DETAILS).
STAINLESS-STEEL CONCRETE ANCHORS PROVIDED FOR OUTDOOR APPLICATIONS.



INTERPRET DIMENSIONS AND TOLERANCES (AW AND Y14.5M-1994) UNLESS OTHERWISE SPECIFIED DIMENSIONS ARE BY RICHES (NAME) TOLERANCES DECIMALS XXX ± .010 XXX ± .010		DATE 11-12-24	TACSON, ARIZONA, 85717-0000	
DESIGNED BY S. APPLEBY		DATE 11-12-24	ascension®	
CHECKED BY By Philip Brobeck at 10:46 am, Nov 13, 2024		DATE 11-12-24	CLARITY LOADING STRAIGHT THROUGH	
DO NOT SCALE DRAWING		SCALE 1/12	FSCM NO. 08992	BWG. NO. CLARITY LOADING
DRAWN BY S. APPLEBY		SCALE 1/12	RELEASED BY S. APPLEBY	REV F
DATE 11-12-24		SHEET 1 OF 3		

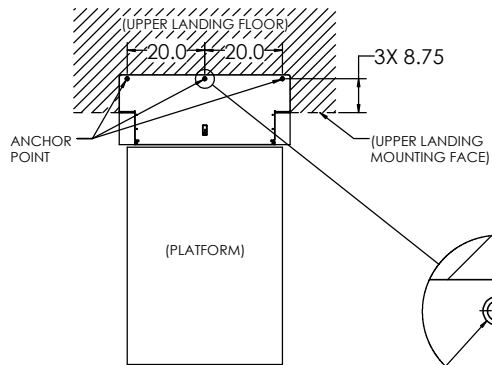
ANCHOR LOCATION TYPE: A

ANCHORS PROVIDED - FOR CONCRETE LANDINGS ONLY:

3X 1/2" X 2" DROP-IN CONCRETE ANCHORS, 1/2-13 INTERNAL THREAD
(EX: SIMPSON STRONG-TIE P/N DIAB50, DIA506SS, OR DIA50SS)

3X 1/2-13 X 1" FLAT HEAD SCREWS

(FILLERS FOR ANCHOR HOLES PROVIDED FOR WOOD LANDINGS)



C'SINK FOR 1/2" FASTENER
THROUGH 1/4" MATERIAL
(ANCHOR POINT)

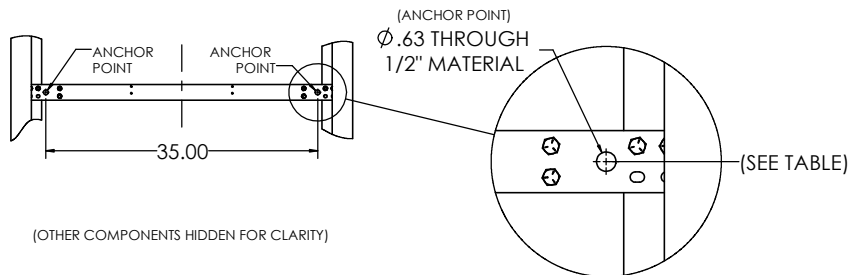
ANCHOR LOCATION TYPE: C

ANCHORS PROVIDED - FOR CONCRETE OR WOOD STRUCTURES:

2X (EACH) 1/2" X 4" CONCRETE ANCHORS

(EX: SIMPSON STRONG-TIE P/N THD50400H, THD50400H6SS, OR THD50400H4SS)

2X (EACH) 1/2" X 4" LAG SCREWS FOR WOOD (INDOOR ONLY)



(OTHER COMPONENTS HIDDEN FOR CLARITY)

ANCHOR LOCATION TYPE: D

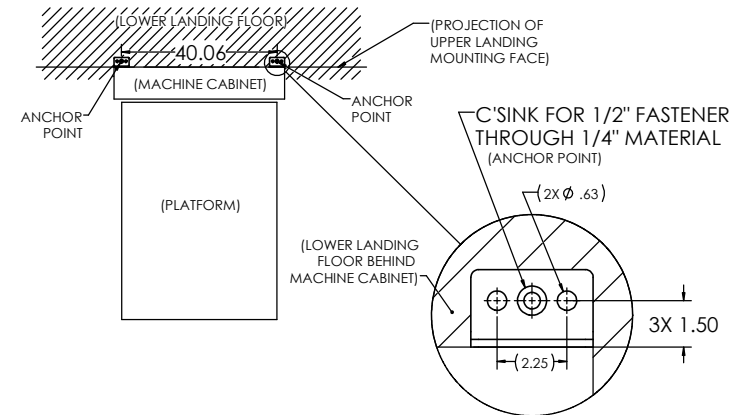
(HOLLOW LANDING PACKAGE [H.L. PKG] ONLY)

ANCHORS PROVIDED - FOR NORMAL-WEIGHT CONCRETE FLOOR ONLY:

2X 1/2" X 2" DROP-IN CONCRETE ANCHORS, 1/2-13 INTERNAL THREAD

(EX: SIMPSON STRONG-TIE P/N DIAB50, DIA506SS, OR DIA50SS)

2X 1/2-13 X 1" FLAT HEAD SCREWS



ANCHOR LOCATION TYPE: F

(CLARITY 16E ONLY)

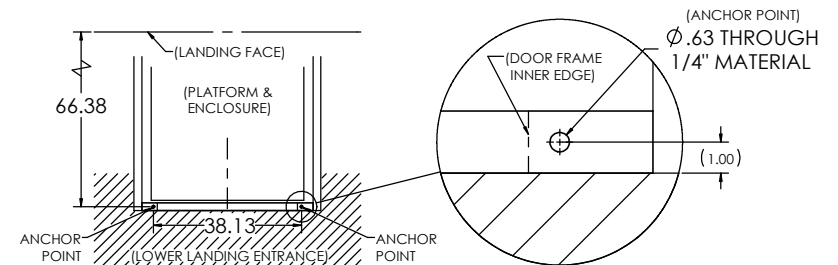
ANCHORS PROVIDED - FOR CONCRETE OR WOOD FLOOR:

2X 1/2" X 2" DROP-IN CONCRETE ANCHORS, 1/2-13 INTERNAL THREAD

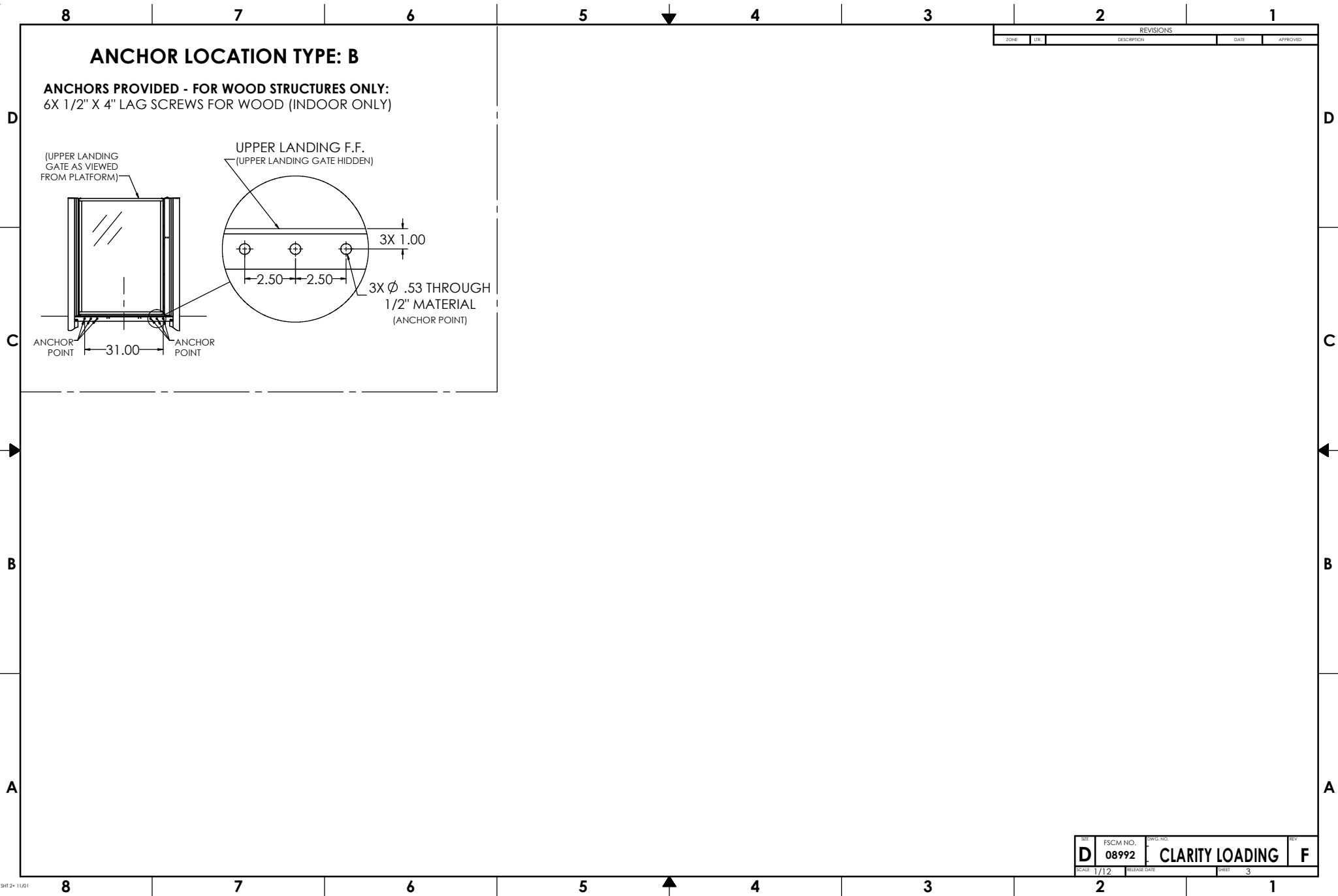
(EX: SIMPSON STRONG-TIE P/N DIAB50, DIA506SS, OR DIA50SS)

2X 1/2-13 X 1" SCREWS

2X 1/2" X 4" LAG SCREWS FOR WOOD (INDOOR ONLY)



REV	FSCM NO.	DWG. NO.	REV
D	08992	CLARITY LOADING	F
SCALE	1/12	RELEASE DATE	SHEET 2



REVISIONS			
ZONE	DATE	DESCRIPTION	APPROVED

SET D	FSCM NO. 08992	DWG. NO. CLARITY LOADING	REV F
SCALE 1/12	RELEASE DATE	SHEET 3	

4

3

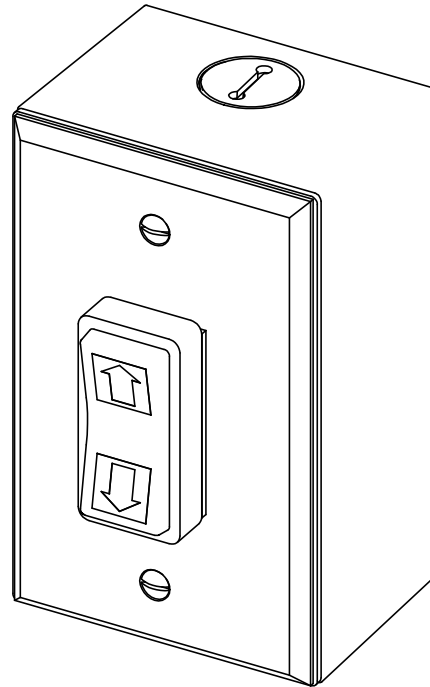
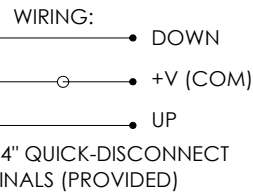
2

1

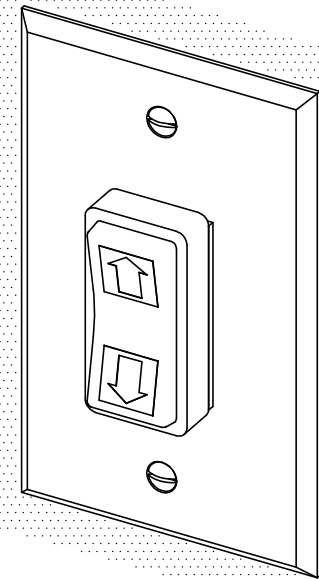
NOTES UNLESS OTHERWISE SPECIFIED:

1. DESCRIPTION: REMOTELY LOCATED CALL STATION FOR ASCENSION VERTICAL PLATFORM WHEELCHAIR LIFT. SUITABLE FOR SURFACE OR FLUSH WALL MOUNT.
2. CHARACTERISTICS:
 - 2.1 COVER PLATE: STANDARD SIZE WALL PLATE (4.5" X 2.75"), BRUSHED STAINLESS STEEL.
 - 2.2 SWITCH: 3 POSITION ROCKER, REQUIRES CONSTANT PRESSURE TO ACTUATE.
 - 2.3 MOUNTING BOX: SURFACE MOUNT SINGLE GANG BOX 2.00" DEEP, OR PREINSTALLED FLUSH MOUNT SINGLE GANG BOX.
 - 2.4 WEATHER RATING: SUITABLE FOR OUTDOOR USE.
3. ADA REQUIREMENTS:
 - 3.1 MOUNT BETWEEN 15" AND 48" ABOVE FLOOR.
IAW ADAAG 308.2 OR 308.3
 - 3.2 PROVIDE 30"x48" OR 48"x30" CLEAR FLOOR SPACE FOR ACCESSING CALL STATION.
IAW ADAAG 309.2 & 305

NOTE: CLEAR FLOOR SPACE MUST BE OUTSIDE SWING OF AUTOMATIC DOORS AND GATES.

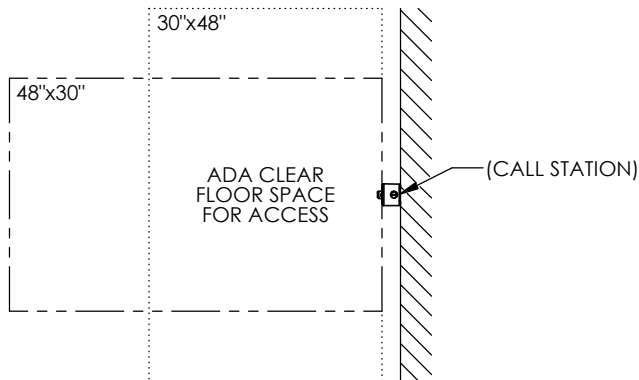


SURFACE MOUNT



FLUSH MOUNT

(PLATE COMPATIBLE WITH PREINSTALLED 1-GANG BOX)



INTERPRET DIMENSIONS AND TOLERANCES IAW ANSI Y14.5M-1994		CONTRACT NO.		P.O. BOX 40020 TUCSON, ARIZONA 85717-0020	
UNLESS OTHERWISE SPECIFIED DIMENSIONS ARE IN INCHES (MM)		DRAWN S. APPLEBY		DATE 12-4-24	
TOLERANCES:		CHECK APPROVED		TITLE OPERATING STATION (CALL BOX) WALL MOUNTED	
DECIMALS .XX ± N/A .XXX ± N/A		ANGLES ± N/A		By CWillis at 10:06 am, Dec 05, 2024	
DO NOT SCALE DRAWING		MANUFACTURING		DWG. NO. 115712	
FINISH		CUSTOMER		REV. E	
SIMILAR TO		ACT. WT.		SCALE 1/1	
CALC. WT.		RELEASE DATE		SHEET 1 OF 1	

4

3

2

1

1. **DESCRIPTION:**

SPECIFICATIONS FOR WALL-MOUNT DOORS AND INTERLOCKS TO BE USED WITH ASCENSION WHEELCHAIR LIFTS (16S, 16C, & CERTAIN 5442F SERIES LIFTS).

2. **CODE REQUIREMENTS:**

DOOR AND INTERLOCK TO COMPLY WITH ALL APPLICABLE CODES AND REQUIREMENTS, INCLUDING ASME A18.1.

GENERAL REQUIREMENTS FOR REFERENCE ONLY:

- DOOR MUST BE SELF-CLOSING
- INSIDE OF DOOR MUST FORM SMOOTH, UNPERFORATED SURFACE FLUSH WITH SURROUNDING FACES OF ENCLOSURE/HOISTWAY
- DOOR AND INTERLOCK MUST WITHSTAND A 125 LBF APPLIED FORCE
- DOOR MUST BE FIRE-RATED (IF APPLICABLE)

3. **INTERLOCK SPECIFICATIONS:**

MECHANICAL INTERLOCK TO INCLUDE TWO (2) PARALLEL (SEPARATE) CONTACTS FOR LIFT'S DOOR CLOSED AND DOOR LOCKED SIGNAL CIRCUITS. CONTACTS TO BE CLOSED WHEN DOOR SHUT AND LOCKED.

INTERLOCK TO BE FAIL-SECURE, 24VDC, 0.5A MAX CURRENT DRAW.

(1.0A MAX CURRENT DRAW FOR PROTÉGÉ 5442F SERIES)

INTERLOCK TO BE CERTIFIED TO ASME A18.1, ASME A17.1, CSA B44, OR CSA B355.

RECOMMENDED INTERLOCK MODELS:

- IDEC HS5L (HS5L-XD44M-G OR SIMILAR)
 - AVAILABLE FROM ASCENSION
- ATLAS ATLOCK (ATLOCK-LP5 (LH), ATLOCK-RP5 (RH), OR SIMILAR)

4. **RECOMMENDED HOISTWAY DOOR MANUFACTURER & MODEL:**

BELCO DOORS

P/N: COM-316

STANDARD FEATURES:

- 1.5 HOUR FIRE RATING
- VISION PANEL
- PRIMED AND READY FOR PAINT

OPTIONS:

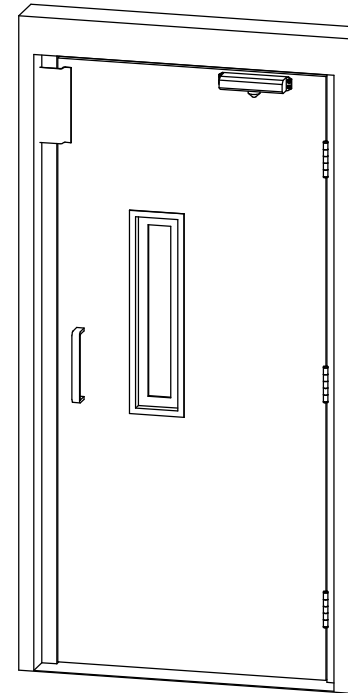
- "RH" OR "LH" HANDING
- CONCEALED POWER DOOR OPERATOR (PDO)
- OUTDOOR WEATHER PACKAGE

FIRE-RATED WOODEN DOOR OPTIONS AVAILABLE; CONTACT BELCO DOORS FOR MORE DETAILS.

WALL-MOUNT DOOR SPECIFICATIONS

FOR DOORS TO BE USED WITH ASCENSION LIFTS

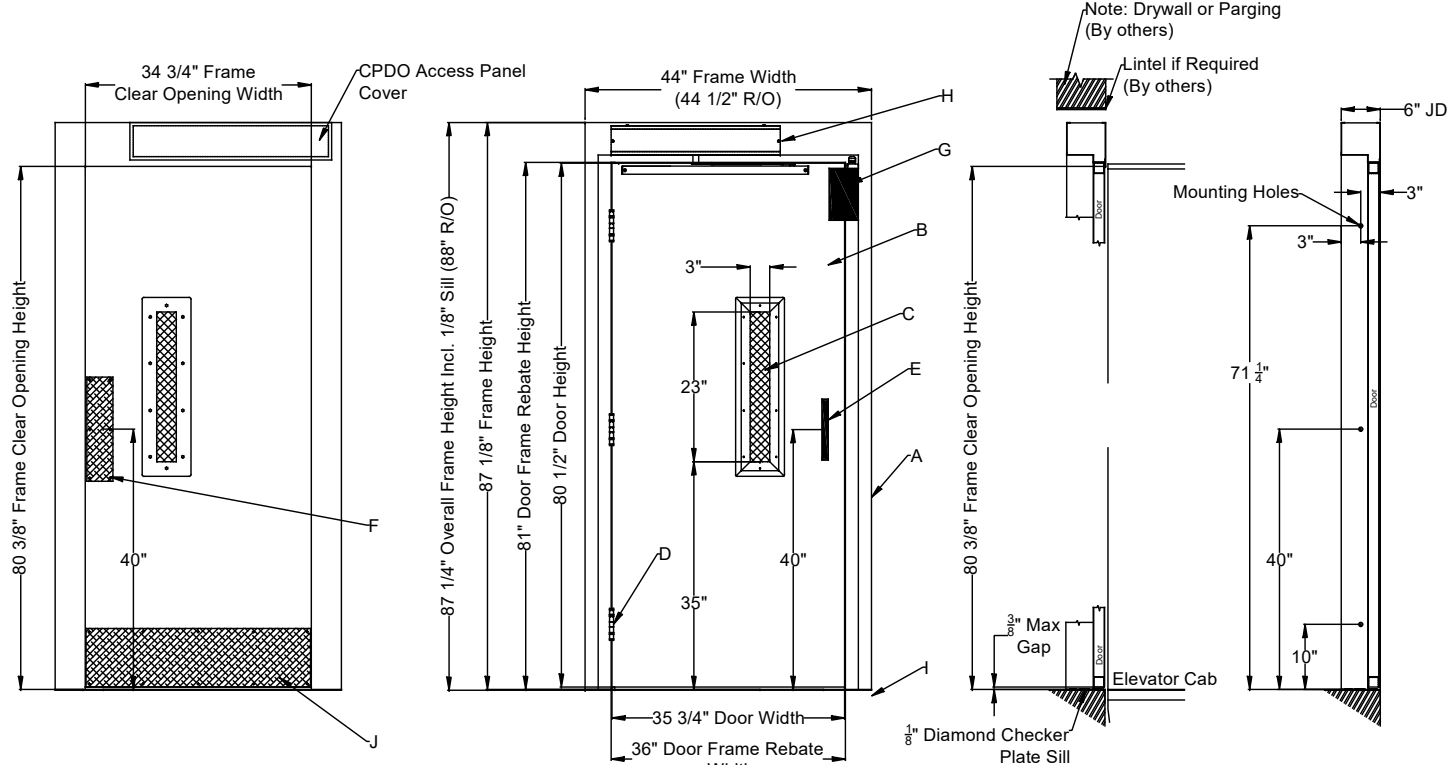
(RECOMMENDED DOOR MODEL **OPTIONALLY** PROVIDED WITH LIFT; SEE QUOTE)



DOOR APPEARANCE FOR REFERENCE ONLY
("LH" HANDING SHOWN)

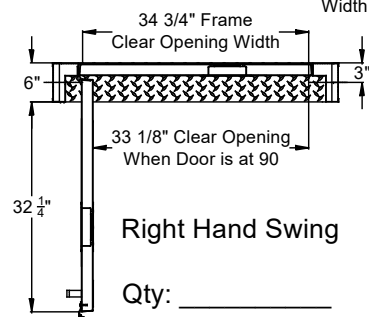
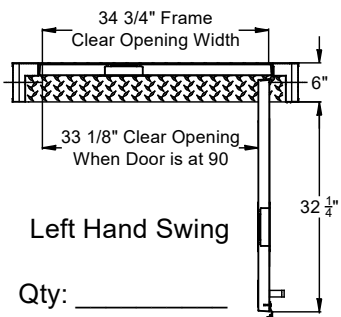
INTERPRET DIMENSIONS AND TOLERANCES (AW AND Y14.5M-1994) UNLESS OTHERWISE SPECIFIED DIMENSIONS ARE IN INCHES (MM) DECIMALS FRACTIONS TOLERANCES ANGLES Holes FRACTIONS TOLERANCES		DATE 12-30-25 BY S. APPLEBY CHECK APPROVED By CWillis at 12:45 pm, Jan 06, 2026	P.O. BOX 4000 TUCSON, ARIZONA 85717-0000 ascension®	
DO NOT SCALE DRAWING		WALL-MOUNT DOOR SPECIFICATIONS		
SCALE 1/8"		FSCM NO. 08992	DWG. NO. 16S DOOR	
SHEET 1 OF 1		REV C		

BELCO DOORS COM-316 ORDER FORM

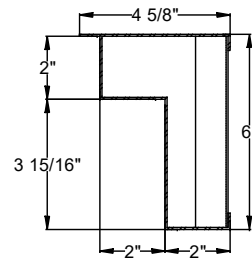


1-1/2 Hour Elevator Approved "B" Fire Label

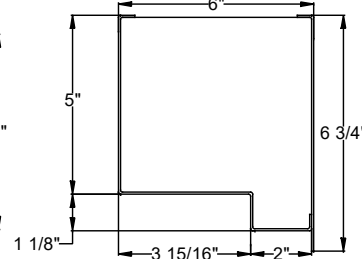
- A. 16ga. Frame (Galvanneal & Paint Ready)
- B. 18ga. Steel Door (Honeycomb Core, Galvanneal & Paint Ready)
- C. 3" x 23" Vision Panel (1/4" Wired Glass)
- D. (3) 4 1/2" NRP BB Hinges (US26D Finish)
- E. D-Handle (Brushed Aluminum)
- F. Push Plate (Brushed Aluminum)
- G. EMI Interlock (Atlas Atlock)
- H. Concealed PDO-110V (Optional)
- I. Flat Diamond Zinc Plated Sill with Sill Pins
- J. Kick Plate (Brushed Aluminum)



Side Jamb Profile



Head Jamb Profile

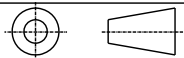


Standard Entrances are provided with a Manual Door Closer, if Power Door Operation is Required - Please Check Box Below

☐ Power Door Operation is Required

Standard Entrances are for Interior use, if Exterior Application Pkg. is Required - Please Check Box Below

☐ Exterior Application Pkg. Required



NIAGARA BELCO DOORS LTD. IS NOT RESPONSIBLE FOR THE STRUCTURAL DESIGN OF THE BUILDING AND ITS ABILITY TO SUPPORT THE ENTRANCE.

REV NO.	REVISION DESCRIPTION	DATE	BY
0	INITIAL RELEASE	2NOV22	JPH

AGM Container COM-316-3681-CPDO Size 36" x 81"			
SCALE:			
DRAWN BY:	DATE LAST MODIFIED:	DRAWING NO.	REV SHEET NO.
JPH	NOV 15 2022	COM-316-3681-CPDO	0 1 OF 1