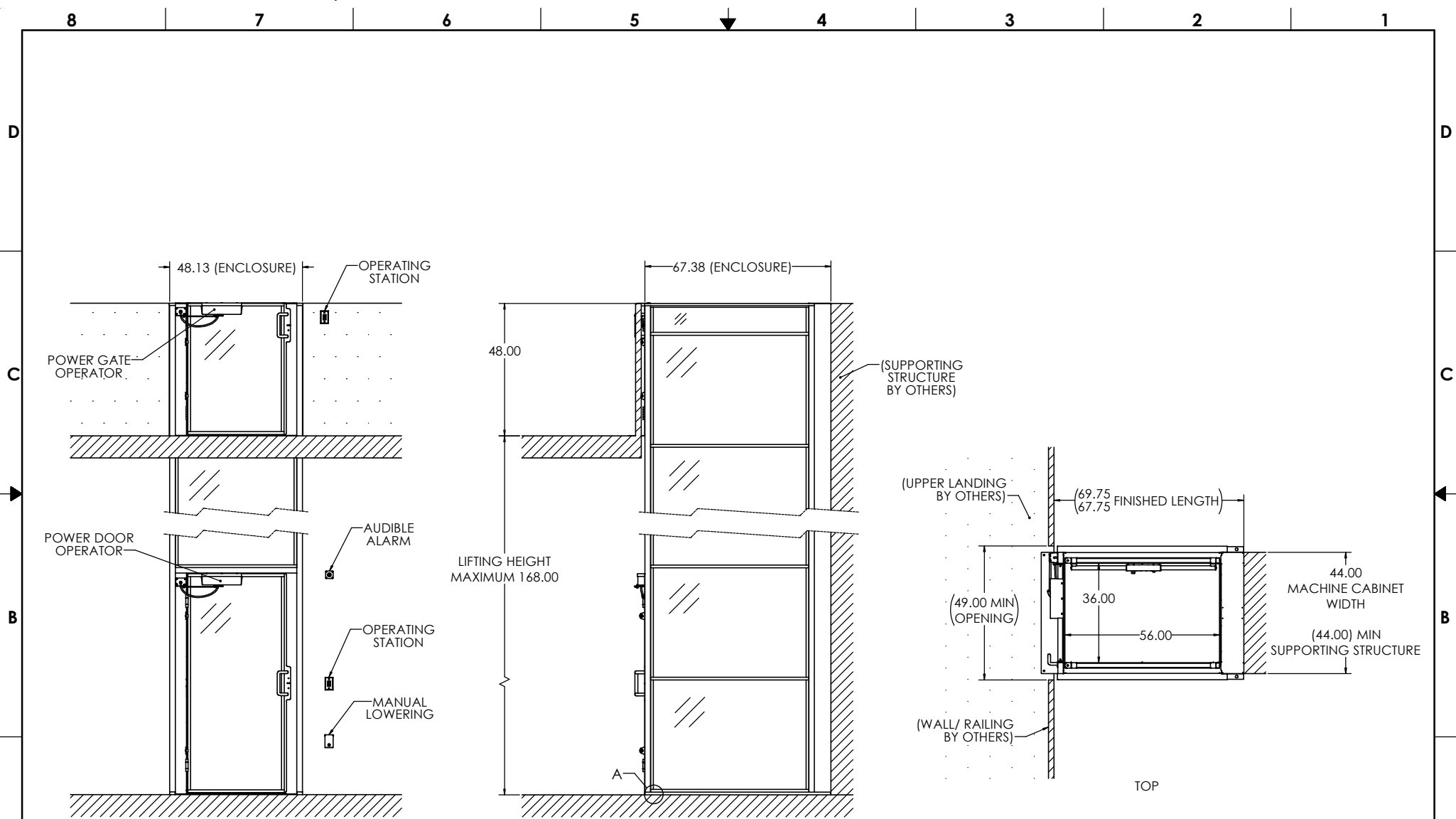


GENERIC DRAWING; CONTACT ASCENSION FOR PROJECT-SPECIFIC DRAWINGS

SEE OTHER CLARITY LIFT MODELS (16C, 16E, 16S, ETC.) FOR OTHER ENTRY/EXIT AND ENCLOSED/SHAFTWAY OPTIONS

SEE OPTIONS BROCHURE AND/OR SHEET 3 FOR VARIOUS CONFIGURATION OPTIONS

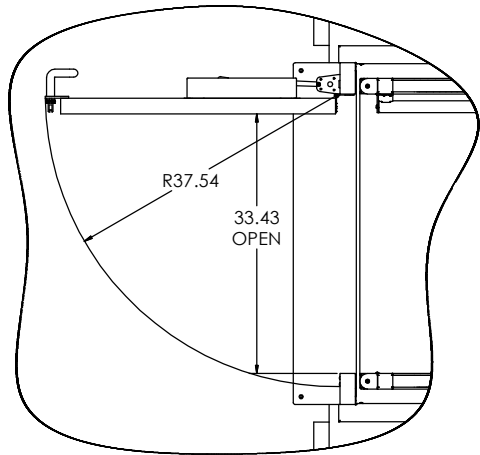


ASCENSION CLARITY 16D VERTICAL PLATFORM WHEELCHAIR LIFT FOR PERMANENT LIFT APPLICATIONS

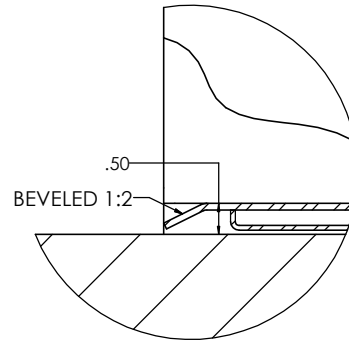
<small>INTERPRET DIMENSIONS AND TOLERANCES IN ACCORDANCE WITH ASME Y14.5M-1994 UNLESS OTHERWISE SPECIFIED DIMENSIONS ARE IN INCHES (MM) TOLERANCES ANGLES ± .4°</small>		<small>F.O. BOX #3002 TUCSON, ARIZONA 85717-3002</small>			
<small>DRAWN BY</small> S. APPELBY	<small>DATE</small> 4/21/2025	CLARITY 16D ENCLOSED, SAME-SIDE			
<small>DO NOT SCALE DRAWING</small>		APPROVED By CWillis at 1:45 pm, Apr 21, 2025		<small>FSCM NO.</small> D 08992	<small>DWG. NO.</small> CLARITY 16D
<small>SCALE</small> 1/16		<small>RELEASE DATE</small>		<small>SHEET</small> 1 OF 3	

8 7 6 5 4 3 2 1

D
C
B
A



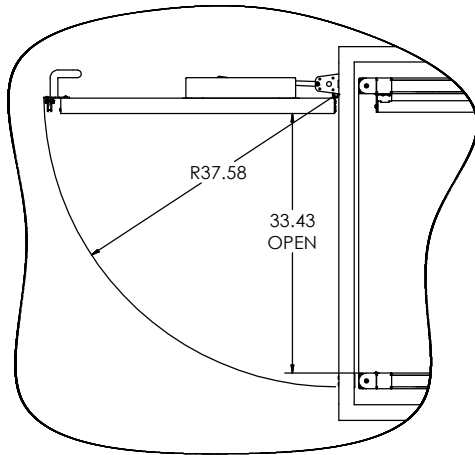
UPPER ENCLOSURE GATE/DOOR
(RH GATE/DOOR SHOWN)



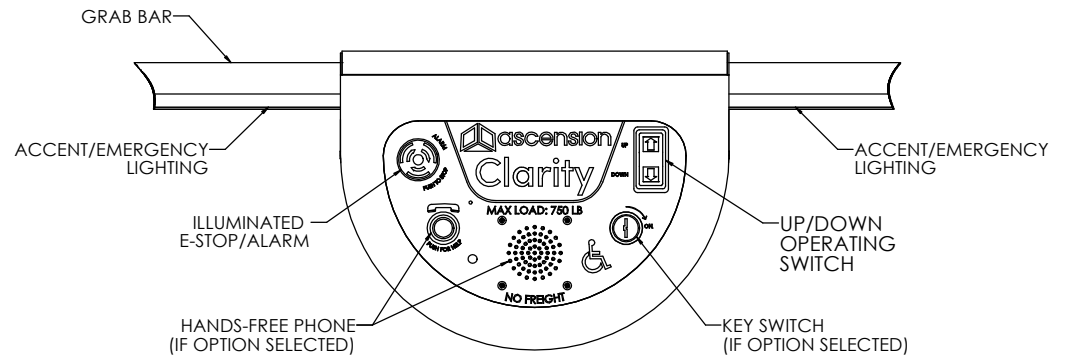
DETAIL A
SCALE 1 : 1
PLATFORM FLOOR
(ENCLOSURE HIDDEN)

DESIGNED FOR PITLESS
INSTALLATION ON TOP OF
FINISHED FLOOR.

LOW-PROFILE PLATFORM
WITH ENTRY THRESHOLD
IAW ADAAG 404.2.5.



LOWER ENCLOSURE DOOR
(RH DOOR SHOWN)



PLATFORM CONTROLS
SCALE 1 : 2

REV	FSCM NO.	DWG. NO.	REV
D	08992	CLARITY 16D	D
SCALE 1/16	RELEASE DATE	SHEET 2	

8 7 6 5 4 3 2 1

8 7 6 5 4 3 2 1

CONFIGURATION

TOTAL TRAVEL	168.00" MAX
ENTRY/EXIT CONFIG.	SAME SIDE
ENCLOSURE PROVIDED	FULL
DOME & VENTILATION	YES/NO

LOWER LANDING	
DOOR TYPE	80" DOOR
HANDING	RH/LH
DOOR OPERATOR	YES
CALL STATION TYPE	WALL/FRAME MOUNT
CALL STATION KEYED	YES/NO

UPPER LANDING	
DOOR TYPE	48" GATE/ 80" DOOR
HANDING	RH/LH
DOOR OPERATOR	YES
CALL STATION TYPE	WALL/FRAME MOUNT
CALL STATION KEYED	YES/NO

PLATFORM	
KEY SWITCH	YES/NO
HANDS-FREE PHONE	YES/NO
PLATFORM LIGHTING	STANDARD
SLIP-RESISTANT FLOOR	STANDARD

OUTDOORS	YES/NO
HOLLOW LANDING	YES/NO
W/ UPPER U-BRACE	YES/NO
PIT SWITCH	STANDARD
MANUAL LOWERING	REMOTE WALL MOUNT
AUDIBLE ALARM	REMOTE WALL MOUNT
BATTERY BACKUP	STANDARD

SPECIFICATIONS

DESCRIPTION	ENCLOSED VERTICAL PLATFORM WHEELCHAIR LIFT
CODE COMPLIANCE	ASME A18.1, ASME A17.5, NFPA 70 (NEC), ANSI A117.1, ADASAD (ADAAG)
APPLIED VERSION	ASME A18.1-2023
MODEL	CLARITY 16D
RATED LOAD	750 LB
RATED SPEED	20 FT/MIN
DUTY CYCLE	168 CYCLE-FT/HR (12 CYCLES/HR MINIMUM)
PLATFORM SIZE	36" X 56"
POWER SUPPLY	27VDC, 500W (18.5A)
BATTERIES	12V, 35A-h AGM SLA (2X)
CONTROL SYS.	24VDC
MOTOR	24VDC, 3 HP
DRIVING MEANS	2:1 CHAIN-HYDRAULIC

PLUNGER (2X)	1.25" SOLID
CYL. I.D. (2X)	2.00"
CYL. O.D. (2X)	2.38"
STROKE (2X)	(VARIES)

WORKING PSI	400 PSI
RELIEF PSI	600 PSI (1.5 X WP)

CHAIN TYPE	4X ANSI #50 ROLLER CHAIN
CHAIN STRENGTH	5045 LBF EACH
SAFETIES	2X TYPE A

DOOR LOCKS	IDEC HS5L
------------	-----------

CONFIGURATION: FINISHES

LIFT COLOR (POWDER COAT)	<input type="checkbox"/> SILVER (STANDARD) <input type="checkbox"/> BLACK <input type="checkbox"/> CUSTOM: _____
HARDWARE COLOR	<input type="checkbox"/> SILVER (STANDARD) <input type="checkbox"/> BLACK <input type="checkbox"/> BRASS <input type="checkbox"/> OIL RUBBED BRONZE
WINDOWS	<input type="checkbox"/> CLEAR PLEXIGLAS (STANDARD) <input type="checkbox"/> TINTED PLEXIGLAS (30%) <input type="checkbox"/> FROSTED PLEXIGLAS <input type="checkbox"/> POWDER COATED STEEL
WINDOW ART	<input type="checkbox"/> NONE (STANDARD) <input type="checkbox"/> CUSTOM LOGO/IMAGE

PROVISIONS BY OTHERS

GENERAL

HOISTWAY: HOISTWAY MUST BE SQUARE AND PLUMB WITHIN 1/4" TO ENSURE PROPER LIFT OPERATION. WHERE PROVIDED BY OTHERS, ENCLOSURE MUST BE DESIGNED AND BUILT IN ACCORDANCE WITH ASME A18.1 AND ALL APPLICABLE STATE AND LOCAL CODES.

REAR CABINET CLOSURE: VERTICAL SURFACE BEHIND MACHINE CABINET SHALL HAVE STRENGTH AND STIFFNESS EQUIVALENT TO 14GA (.08) SHEET STEEL. (PROVIDED BY ASCENSION IF OPTIONAL HOLLOW LANDING PACKAGE SELECTED).

DIMENSIONS: TOTAL TRAVEL HEIGHT MUST BE WITHIN ±3/8" OF NOMINAL. VERIFY ALL DIMENSIONS AND IMMEDIATELY REPORT ANY DISCREPANCIES.

FLOOR: FLOOR BENEATH UNIT AND DOOR SWINGS MUST BE FLAT AND LEVEL WITHIN 1/8". OUTDOORS, DRAINAGE SHALL NOT FLOW THROUGH OR INTO UNIT.

PIT/RAMP: DO NOT PROVIDE PIT OR RAMP. LIFT DESIGNED WITH LOW-PROFILE PLATFORM FLOOR FOR DIRECT ENTRY IAW ADAAG 404.2.5.

OVERHEAD CLEARANCE: MUST COMPLY WITH ALL APPLICABLE CODES.

CONSTRUCTION COORDINATION: OWNER/AGENT RESPONSIBLE FOR ALL MASONRY, CARPENTRY, DRYWALL, PATCHING, AND FINISHING WORK NEEDED PRIOR TO AND FOLLOWING LIFT INSTALLATION.

STRUCTURAL: SUPPORTING STRUCTURE SHALL BE DESIGNED AND CONSTRUCTED TO SAFELY SUPPORT APPLIED LOADS IN ACCORDANCE WITH "CLARITY LOADING" DIAGRAM.

ELECTRICAL

GENERAL: ALL WIRING SHALL COMPLY WITH NFPA 70 (NEC).

POWER: 120VAC, 60HZ, 6A, 1PH CIRCUIT WITH DISCONNECT (SEE BELOW).

CONCEALED REAR ACCESS: CLEAR SPACE 7.25" X 7.50" (W x H) BEHIND LIFT AVAILABLE FOR WIRE ENTRY. SPACE CENTERED 10.88" RIGHT OF LIFT CENTERLINE AND NOMINALLY 6.88" ABOVE LOWER LANDING FLOOR.

SIDE ACCESS: TWO 1/2-14 NPSM THREADED HOLES ARE PROVIDED ON BOTH SIDES OF THE MACHINE CABINET. HOLES ARE NOMINALLY 2.25" AND 3.50" ABOVE LOWER FLOOR AND 1.00" FROM REAR VERTICAL WALL.

MAIN DISCONNECT SWITCH: OTHERS SHALL PROVIDE LOCKABLE FUSED DISCONNECT SWITCH IAW NFPA 70. SWITCH TO INCLUDE ADDITIONAL POLE OR CONTACT FOR DISCONNECTION OF CONTROLLER FROM 24V BACKUP SUPPLY.

LIGHTING: 54 LX MIN. AT PLATFORM AND LANDINGS.

ADDITIONAL AC CONNECTIONS: ADDITIONAL AC CONNECTIONS REQUIRED FOR: VENTILATION SYSTEM (IF EQUIPPED), 120VAC 1.3A 60HZ 1PH.

DOOR OPERATOR(S) (IF BY OTHERS), POWER REQ. PER MANUFACTURER

PHONE: STANDARD PHONE CABLE WITH RJ11 PLUG CONNECTOR REQUIRED FOR OPTIONAL (ANALOG) HANDS-FREE PHONE, WHERE PROVIDED.

REV	FSCM NO.	DWG. NO.	REV
D	08992	CLARITY 16D	D
SCALE 1/16	RELEASED	SHEET 3	

8 7 6 5 4 3 2 1

CLARITY LOADING - SAME SIDE ENTRY & EXIT (16C, 16D)

(GENERIC APPLICATION DEPICTED; ENCLOSURE NOT SHOWN)

MACHINE CABINET ANCHORS

ANCHORING REQUIREMENT	ANCHOR LOCATION* (±.38) [IN]	MAX LOAD** [LBF]	# OF ANCHORS	TYPE (NEXT SHEETS)	APPLICABILITY
ANCHOR AT ONE OF THESE LOCATIONS. OTHERS OPTIONAL†	193.50	227	2	C	TRAVEL > 148"
	169.50				TRAVEL > 124"
	145.50				TRAVEL > 100"
	121.50				ALL LIFTS
	BELOW SILL	100	8	G	16D HL PKG WITH U-BRACE ONLY
OPTIONAL†	97.50	227	2	C	ALL LIFTS
	73.50				
	49.50				
	25.50				
ANCHOR AT ONE OF THESE LOCATIONS	6.00	227	2	C	NO HL PKG
	LOWER F.F.	327	2	D	HL PKG ONLY

ENCLOSURE ANCHORS (16D MODEL ONLY)

REQUIRED IF PRESENT	UPPER F.F.	100	2	E	16D ONLY
REQUIRED IF PRESENT	LOWER F.F.	100	2	F	16D ONLY

* ACTUAL LOCATIONS OF WALL ANCHORS MAY VARY AS MUCH AS ±3/8" FROM VALUES GIVEN ABOVE. MOUNTING STRUCTURE MUST BE ABLE TO ACCOMMODATE THIS VARIABILITY.

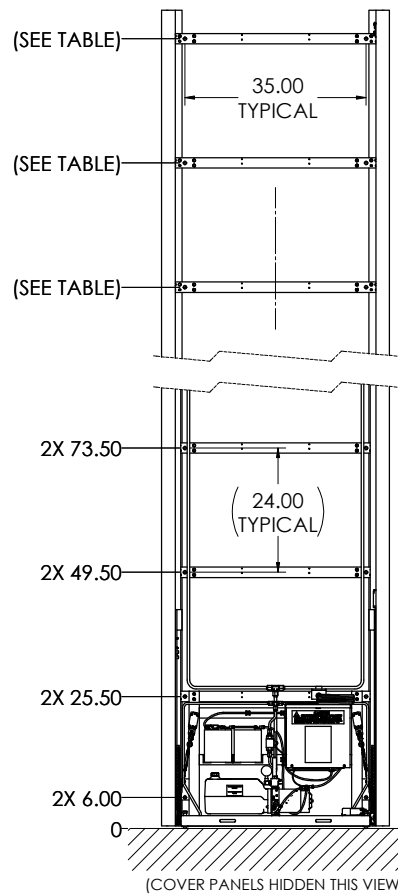
** LOADS LISTED ASSUME STATIC LOADING AND DO NOT INCLUDE WIND, SEISMIC, OR SAFETY FACTOR.

† USE OF OPTIONAL ANCHORS RECOMMENDED FOR MAXIMUM RIGIDITY.

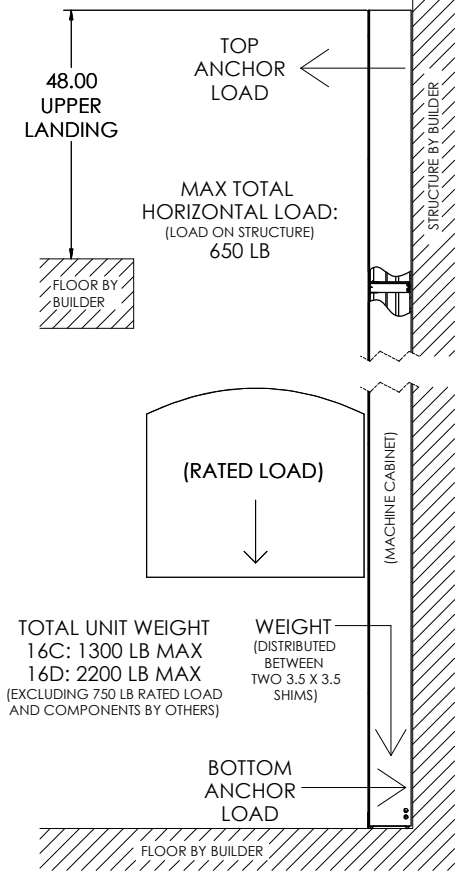
ADDITIONAL NOTES:

- ANCHORS PROVIDED BY ASCENSION FOR COMMON MOUNTING APPLICATIONS. (SEE NEXT SHEET FOR DETAILS).
STAINLESS-STEEL CONCRETE ANCHORS PROVIDED FOR OUTDOOR APPLICATIONS.

FRONT VIEW
ANCHOR LOCATIONS (TYPE C)



SIDE VIEW



TOTAL UNIT WEIGHT
16C: 1300 LB MAX
16D: 2200 LB MAX
(EXCLUDING 750 LB RATED LOAD AND COMPONENTS BY OTHERS)

WEIGHT (DISTRIBUTED BETWEEN TWO 3.5 X 3.5 SHIMS)

INTERPRET DIMENSIONE AND TOLERANCES IN ACCORDANCE WITH ANSI Y14.5M-1994 UNLESS OTHERWISE SPECIFIED DIMENSIONE ARE IN INCHES (NAME DIMENSIONE TOLERANCES ANGLES & SURF. XXX ± N/A		DATE: 10-24-24		P. BROBECK		F.O. BOX 4000 TUCSON, ARIZONA 85717-0000		ascension®	
DO NOT SCALE DRAWING.		APPROVED		By SAppley at 12:13 pm, Apr 21, 2025		FSCM NO. 08992		CLARITY LOADING SS	
SCALE: 1/16		RELEASE DATE:		SHEET: 1 OF 4		REV: B			

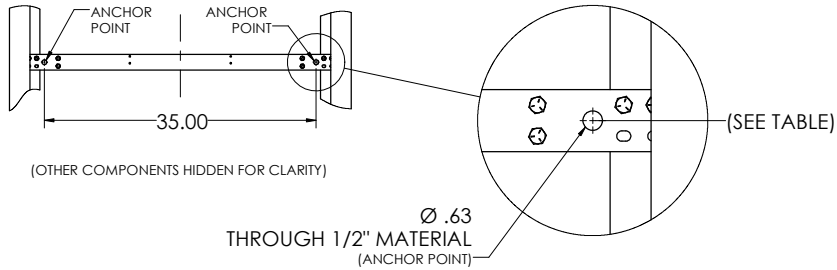
ANCHOR LOCATION TYPE: C

ANCHORS PROVIDED - FOR CONCRETE OR WOOD STRUCTURES:

2X (EACH) 1/2" X 4" CONCRETE ANCHORS

(EX: SIMPSON STRONG-TIE P/N THD50400H, THD50400H6SS, OR THD50400H4SS)

2X (EACH) 1/2" X 4" LAG SCREWS FOR WOOD (INDOOR ONLY)



ANCHOR LOCATION TYPE: E

(CLARITY 16D ONLY)

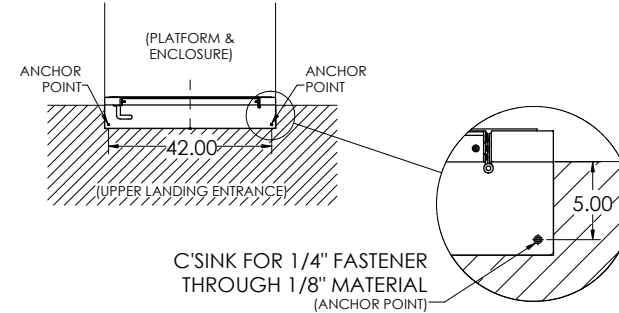
ANCHORS PROVIDED - FOR CONCRETE OR WOOD LANDINGS:

2X 1/4" X 2.25" FLAT HEAD CONCRETE ANCHORS

(EX: SIMPSON STRONG-TIE P/N TTN25214PFSS)

2X 1/4-20 THREADED INSERTS FOR WOOD (INDOOR ONLY)

2X 1/4-20 FLAT HEAD SCREWS



ANCHOR LOCATION TYPE: D

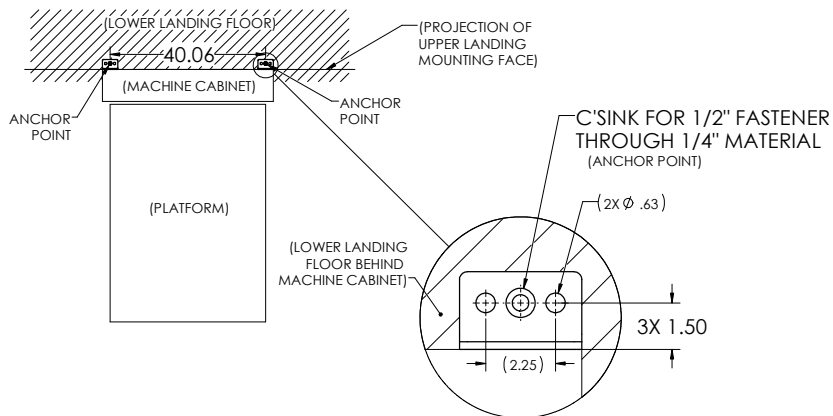
(HOLLOW LANDING PACKAGE [HL PKG] ONLY)

ANCHORS PROVIDED - FOR NORMAL-WEIGHT CONCRETE FLOOR ONLY:

2X 1/2" X 2" DROP-IN CONCRETE ANCHORS, 1/2-13 INTERNAL THREAD

(EX: SIMPSON STRONG-TIE P/N DIAB50, DIA506SS, OR DIA50SS)

2X 1/2-13 X 1" FLAT HEAD SCREWS



ANCHOR LOCATION TYPE: F

(CLARITY 16D ONLY)

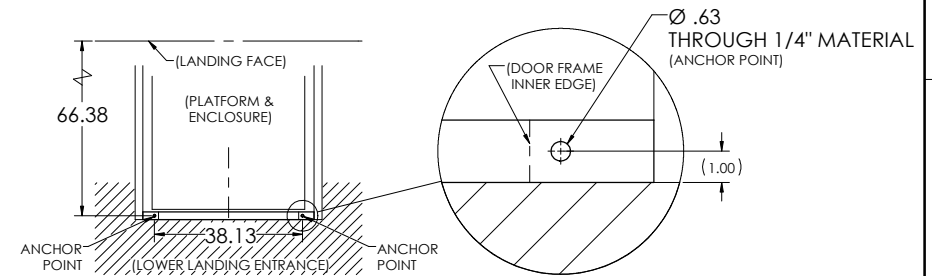
ANCHORS PROVIDED - FOR CONCRETE OR WOOD FLOOR:

2X 1/2" X 2" DROP-IN CONCRETE ANCHORS, 1/2-13 INTERNAL THREAD

(EX: SIMPSON STRONG-TIE P/N DIAB50, DIA506SS, OR DIA50SS)

2X 1/2-13 X 1" SCREWS

2X 1/2" X 4" LAG SCREWS FOR WOOD (INDOOR ONLY)



REV	FSCM NO.	DWG. NO.	REV
D	08992	CLARITY LOADING SS	B
SCALE 1/16	RELEASE DATE	SHEET 2	

8 7 6 5 4 3 2 1

REVISIONS				
ZONE	ITE	DESCRIPTION	DATE	APPROVED

ANCHOR LOCATION TYPE: G

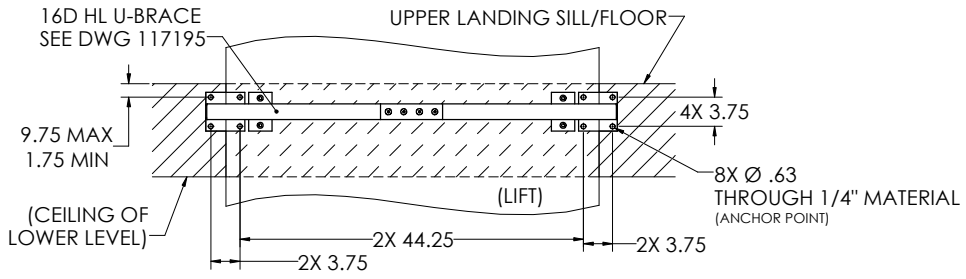
(16D HOLLOW LANDING PACKAGE [HL PKG] WITH U-BRACE ONLY)

ANCHORS PROVIDED - FOR STEEL, CONCRETE, OR WOOD STRUCTURES:

8X 1/2" X 4" CONCRETE ANCHORS
 (EX: SIMPSON STRONG-TIE P/N THD50400H, THD50400H6SS, OR THD50400H4SS)

8X 1/2" X 4" LAG SCREWS FOR WOOD (INDOOR ONLY)

8X 1/2"-13 X 3" BOLTS WITH NUTS & WASHERS



D

D

C

C

B

B

A

A

SET	FSCM NO.	DWG. NO.	REV
D	08992	CLARITY LOADING SS	B
SCALE	1/16	RELEASE DATE	SHEET 3

8 7 6 5 4 3 2 1

4

3

2

1

D

D

C

C

B

B

A

A

REVISIONS				
ZONE	LTR.	DESCRIPTION	DATE	APPROVAL

U-BRACE MUST BE INSTALLED SUCH THAT ANCHOR PLATES ARE VERTICALLY ALIGNED (PLUMB) TO EDGE OF UPPER LANDING SILL

LATERAL FORCE ON UPPER LANDING
500 LB MAX

COMPRESSIVE FORCE ON UPPER LANDING
650 LB MAX

(LIFT WITH ENCLOSURE INSTALLS INSIDE OF U-BRACE)

(LIFT ENTRANCES THIS END)

3.75

5.00

53.00 51.75

8X 1/2" ANCHOR CLEARANCE [2]
FASTEN TO SIDE OF UPPER LANDING

MATCH DRILL Ø3/8 HOLES THROUGH LIFT GUIDE RAILS AND BOLT TO U-BRACE. USE UPPER HOLES, LOWER HOLES, OR ALL FOUR. FASTENERS PROVIDED BY ASCENSION.


NOTES UNLESS OTHERWISE SPECIFIED:

1. THIS ITEM CONNECTS THE ANCHOR POINTS AT THE REAR OF THE CLARITY 16D MACHINE CABINET TO THE SIDE OF THE UPPER LANDING AT THE FRONT OF THE LIFT.

2. ANCHOR OPTIONS PROVIDED BY ASCENSION:
1/2-13 X 3.00" HEX BOLTS WITH NUTS & WASHERS
Ø1/2 X 4.00" LAG SCREWS
Ø1/2 X 4.00" CONCRETE SCREWS

3. MATERIAL: POWDER COATED STEEL.
WEIGHT: 55 LB.

PART NO.	COLOR
117195-8	SILVER (STANDARD)
117195-99	CUSTOM

<small>INTERPRET DIMENSIONS AND TOLERANCES IAW ANSI Y14.5M-1994</small> <small>UNLESS OTHERWISE SPECIFIED DIMENSIONS ARE IN INCHES (MM)</small> <small>TOLERANCES:</small> <small>DECIMALS ANGLES</small> <small>.XX ± .25 ± .5°</small> <small>.XXX ± .125</small>		<small>CONTRACT NO.</small> <small>DRAWN</small> P.BROBECK <small>DATE</small> 10-24-24 <small>CHECK</small> APPROVED <small>By SAppleby at 2:40 pm, Oct 24, 2024</small>		<small>P.O. BOX 40020</small> <small>TUCSON, ARIZONA 85717-0020</small> 	
<small>DO NOT SCALE DRAWING</small>		TITLE HOLLOW LANDING PKG U-BRACE FOR CLARITY 16D UPPER ANCHORAGE			
<small>FINISH</small>		<small>MANUFACTURING</small>		<small>SIZE</small> B <small>FSCM NO.</small> 08992 <small>DWG. NO.</small> 117195 <small>REV.</small> -	
<small>SIMILAR TO</small>		<small>ACT. WT.</small> <small>CALC. WT.</small>		<small>SCALE</small> 1/10 <small>RELEASE DATE</small> <small>SHEET</small> 1 OF 1	

4

3

2

1

4

3

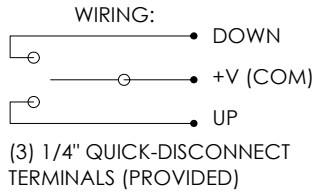
2

1

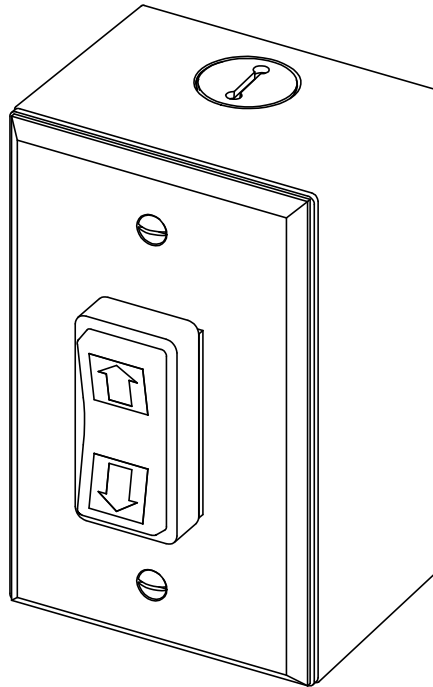
NOTES UNLESS OTHERWISE SPECIFIED:

1. DESCRIPTION: REMOTELY LOCATED CALL STATION FOR ASCENSION VERTICAL PLATFORM WHEELCHAIR LIFT. SUITABLE FOR SURFACE OR FLUSH WALL MOUNT.
2. CHARACTERISTICS:
 - 2.1 COVER PLATE: STANDARD SIZE WALL PLATE (4.5" X 2.75"), BRUSHED STAINLESS STEEL.
 - 2.2 SWITCH: 3 POSITION ROCKER, REQUIRES CONSTANT PRESSURE TO ACTUATE.
 - 2.3 MOUNTING BOX: SURFACE MOUNT SINGLE GANG BOX 2.00" DEEP, OR PREINSTALLED FLUSH MOUNT SINGLE GANG BOX.
 - 2.4 WEATHER RATING: SUITABLE FOR OUTDOOR USE.
3. ADA REQUIREMENTS:
 - 3.1 MOUNT BETWEEN 15" AND 48" ABOVE FLOOR. IAW ADAAG 308.2 OR 308.3
 - 3.2 PROVIDE 30"x48" OR 48"x30" CLEAR FLOOR SPACE FOR ACCESSING CALL STATION. IAW ADAAG 309.2 & 305

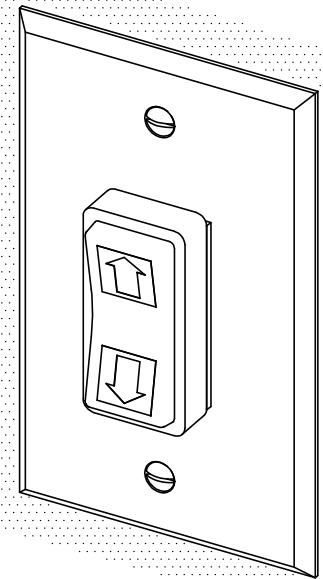
NOTE: CLEAR FLOOR SPACE MUST BE OUTSIDE SWING OF AUTOMATIC DOORS AND GATES.



REVISIONS				
ZONE	LTR.	DESCRIPTION	DATE	APPROVAL



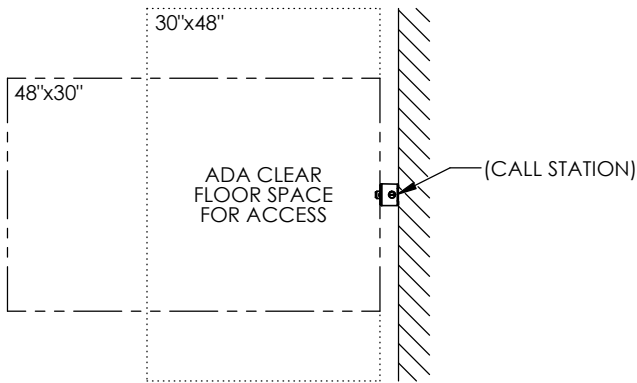
SURFACE MOUNT



OR

FLUSH MOUNT

(PLATE COMPATIBLE WITH PREINSTALLED 1-GANG BOX)



INTERPRET DIMENSIONS AND TOLERANCES IAW ANSI Y14.5M-1994		CONTRACT NO.		P.O. BOX 40020 TUCSON, ARIZONA 85717-0020	
UNLESS OTHERWISE SPECIFIED DIMENSIONS ARE IN INCHES (MM)		DRAWN S. APPELBY	DATE 12-4-24	ascension®	
TOLERANCES: DECIMALS .XX ± N/A .XXX ± N/A		CHECK APPROVED By CWillis at 10:06 am, Dec 05, 2024		TITLE OPERATING STATION (CALL BOX) WALL MOUNTED	
ANGLES ± N/A		MANUFACTURING		SIZE B	FSCM NO. 08992
DO NOT SCALE DRAWING		CUSTOMER		DWG. NO. 115712	REV. E
SIMILAR TO	ACT. WT.	CALC. WT.		SCALE 1/1	RELEASE DATE
					SHEET 1 OF 1

4

3

2

1

4

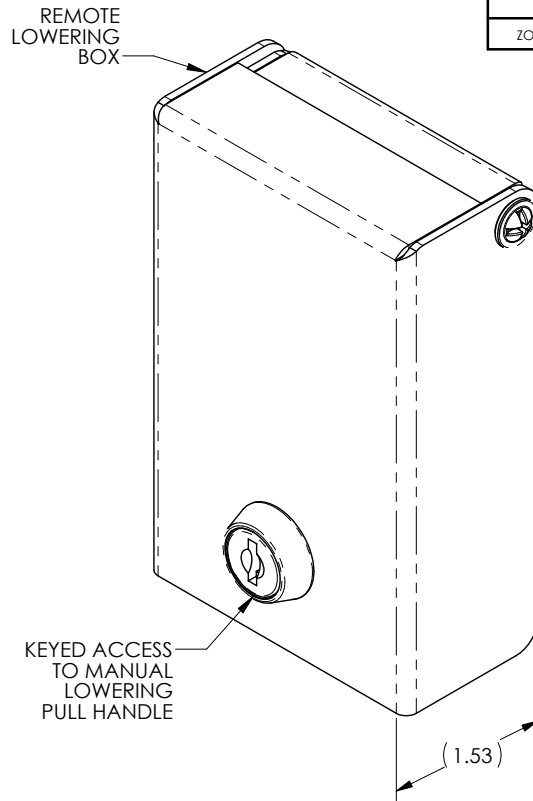
3

2

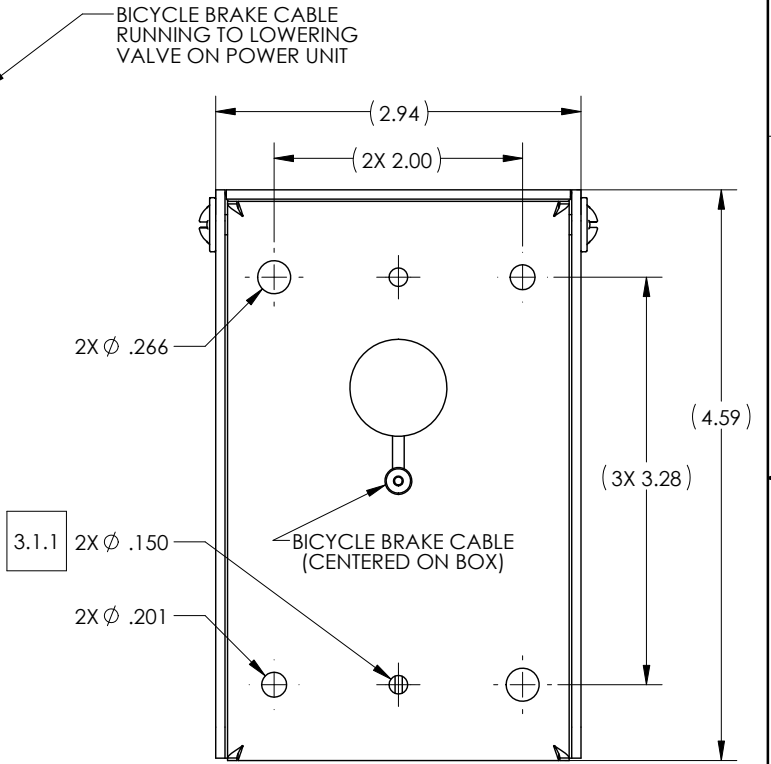
1

NOTES UNLESS OTHERWISE SPECIFIED:

1. DESCRIPTION: REMOTELY LOCATED MANUAL LOWERING STATION FOR ASCENSION VERTICAL PLATFORM WHEELCHAIR LIFTS.
2. CHARACTERISTICS:
 - 2.1 KEYED ACCESS TO MANUAL LOWERING PULL HANDLE LOCATED BEHIND LOCKED COVER.
 - 2.2 160" LONG BICYCLE BRAKE CABLE RUNNING FROM BACK OF BOX TO BE CONNECTED TO LOWERING VALVE ON LIFT POWER UNIT.
 - 2.3 THREE (3) SEPARATE PAIRS OF MOUNTING HOLES AVAILABLE FOR MOUNTING REMOTE LOWERING BOX TO WALL.
3. SITE CONSIDERATIONS:
 - 3.1 PROVIDE MEANS FOR MOUNTING REMOTE MANUAL LOWERING BOX TO WALL.
 - 3.1.1 THE .150" DIAMETER HOLES ARE LOCATED FOR FASTENING TO FRONT OF STANDARD RECESSED SINGLE GANG WALL BOX
 - 3.2 PROVIDE MEANS TO ROUTE BICYCLE BRAKE CABLE FROM BACK OF REMOTE MANUAL LOWERING BOX TO LOWERING VALVE ON POWER UNIT
 - 3.3 ENSURE ANY BENDS IN BICYCLE BRAKE CABLE HAVE AT LEAST A 2.00" RADIUS.



REVISIONS				
ZONE	LTR.	DESCRIPTION	DATE	APPROVAL



MOUNTING HOLES (BACK VIEW)

INTERPRET DIMENSIONS AND TOLERANCES IAW ANSI Y14.5M-1994 UNLESS OTHERWISE SPECIFIED DIMENSIONS ARE IN INCHES TOLERANCES: DECIMALS .XX ± N/A .XXX ± N/A ANGLES ± N/A DO NOT SCALE DRAWING				CONTRACT NO. DRAWN S.APPLEBY DATE 8-12-19 CHECK APPROVED <i>By Philip Brobeck at 12:15 pm, Aug 13, 2019</i>			
PART DASH NO.		NEXT FINAL		NEXT ASSY.		USED ON	
QTY. REQ'D PER ASSY.		APPLICATION		SIMILAR TO		ACT. WT. CALC. WT.	
FINISH				MANUFACTURING			
CUSTOMER							

AGM CONTAINER CONTROLS, INC.
 P.O. BOX 40020 - TUCSON, ARIZONA 85717-0020

TITLE **REMOTE MANUAL LOWERING STATION WALL MOUNTED**

SIZE B	FSCM NO. 08992	DWG. NO. 117580	REV. -
SCALE 1/1	RELEASE DATE	SHEET 1 OF 1	

4

3

2

1