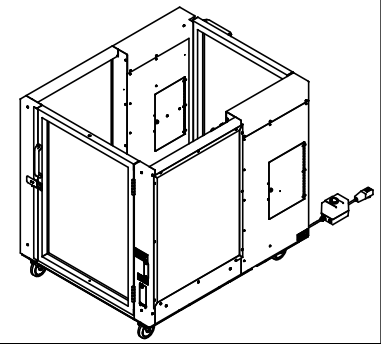


FRONT VIEW
(LOWER LANDING)

SIDE VIEW

BACK VIEW
(UPPER LANDING)



**ASCENSION PROTÉGÉ 5442P VERTICAL PLATFORM WHEELCHAIR LIFT
FOR RELOCATABLE LIFT APPLICATIONS**

PROJECT NAME, CITY, STATE:

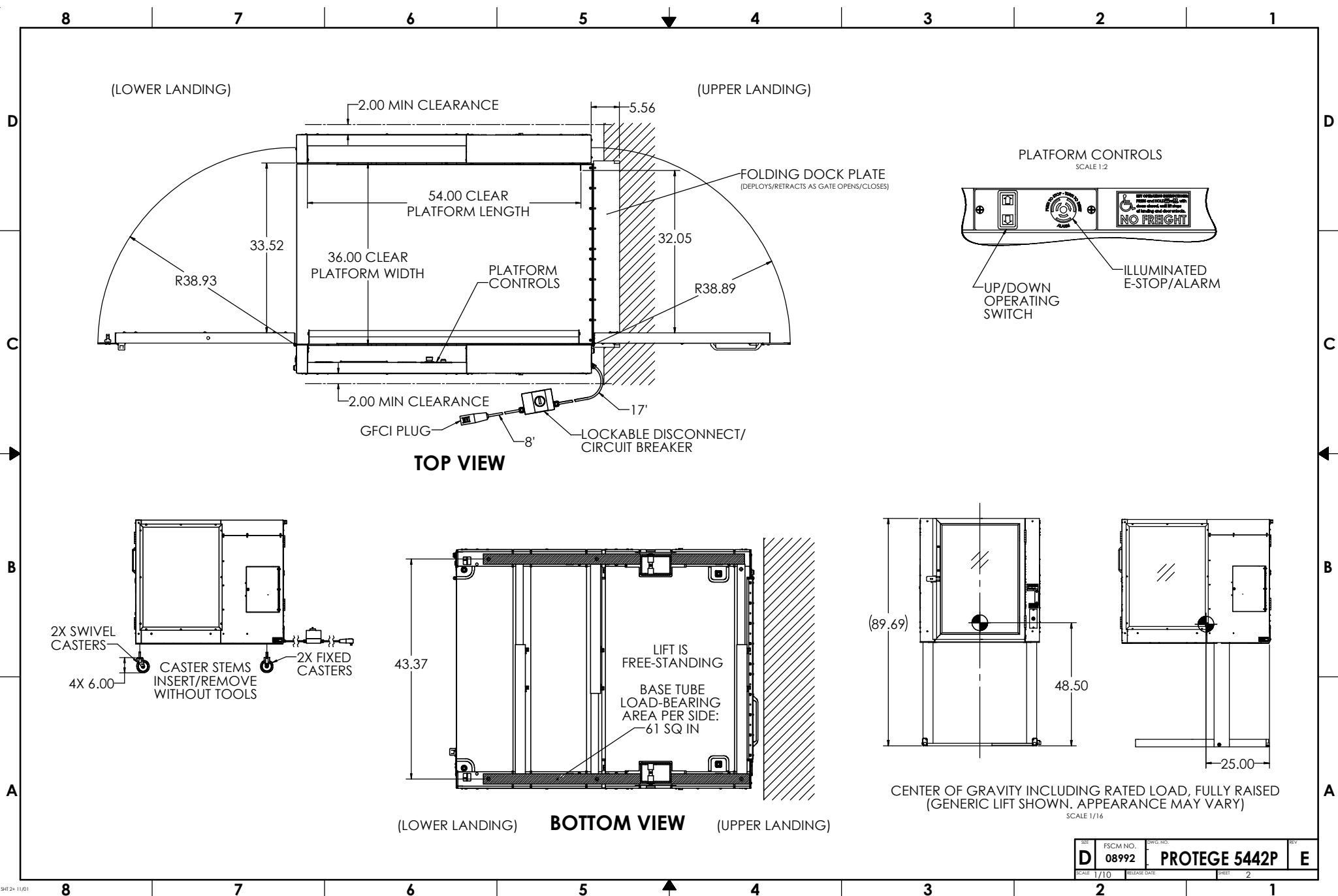
PROTEGE P/N:
PROTEGE 5442P-1

<small>INTERPRET DIMENSIONS AND TOLERANCES IN ACCORDANCE WITH ASME Y14.5M-1994 UNLESS OTHERWISE SPECIFIED DIMENSIONS ARE IN INCHES (MM) TOLERANCES ANGLES</small> <small>DECIMALS .004 .015 .030 .004 .015 .030</small>		<small>DATE</small> 7/31/2024	<small>SCALE</small> 1/10	<small>RELEASE DATE</small> 7/31/2024	<small>BY</small> PHILIP BROBECK	<small>DATE</small> 7/31/2024	<small>BY</small> PHILIP BROBECK	<small>DATE</small> 7/31/2024	<small>BY</small> PHILIP BROBECK
<small>DO NOT SCALE DRAWING</small>		<small>CHECKED</small> APPROVED <i>By Phillip Brobeck at 9:16 am, Aug 01, 2024</i>	<small>SCALE</small> D	<small>FSCM NO.</small> 08992	<small>DWG. NO.</small> PROTEGE 5442P	<small>REV</small> E	<small>SCALE</small> 1/10 <small>RELEASE DATE</small> 7/31/2024 <small>SHEET</small> 1 OF 3		



**PROTEGE 5442P
RELOCATABLE PLATFORM LIFT**

PROTEGE 5442P



REV	FSCM NO.	DWG. NO.	REV
D	08992	PROTEGE 5442P	E
SCALE 1/10	RELEASE DATE	SHEET 2	

8 7 6 5 4 3 2 1

CONFIGURATION

TOTAL TRAVEL	UP TO 42.00"
ENTRY/EXIT CONFIG.	STRAIGHT THROUGH

LOWER LANDING	
DOOR TYPE	PLATFORM GATE
HANDING	LH
DOOR OPERATOR	NO
CALL STATION TYPE*	FRAME MOUNT
CALL STATION KEYED	NO

UPPER LANDING	
DOOR TYPE	PLATFORM GATE
HANDING	RH
DOOR OPERATOR	N/A
CALL STATION TYPE*	FRAME MOUNT
CALL STATION KEYED	NO

PLATFORM	
KEY SWITCH	NO
GRAB BAR	STANDARD
SLIP-RESISTANT FLOOR	STANDARD

OUTDOOR PACKAGE	NO
AUDIBLE ALARM	STANDARD
UNDER-PLATFORM SAFETY PAN	STANDARD
TILT SWITCH	STANDARD
ACCESS PANELS (4X)	STANDARD
HAND PUMP	STANDARD
FRONT LOWERING VALVE (FLV)	STANDARD

ELECTRICAL POWER	120VAC 60HZ 13A
PLUG TYPE	NEMA 5-15 (TYPICAL USA PLUG)
EXTERNAL BATTERY BACKUP UNIT (UPS)	NO
STANCHION PKG*	NO
COMPRESSION/EXPANSION TOOLKIT	NO
LIFT COVER	NO

* OPTIONAL STANCHION PACKAGE KEEPS OPERATING SWITCHES WITHIN ADA REACH RANGE WHEN TRAVEL EXCEEDS 29 INCHES.

SPECIFICATIONS

DESCRIPTION	VERTICAL PLATFORM WHEELCHAIR LIFT
CODE COMPLIANCE	ASME A18.1, ASME A17.5, NFPA 70 (NEC), ANSI A117.1, ADASAD (ADAAG)
APPLIED VERSION	ASME A18.1-2020
MODEL	PROTEGE 5442P
UNIT WEIGHT	850 LB
RATED LOAD	900 LB
RATED SPEED	5 FT/MIN
DUTY CYCLE	S2: 20 MIN SINGLE RUN S3: 13% INTERMITTENT RUN
PLATFORM SIZE	36" X 58"
POWER SUPPLY	24VDC, 1.75A (42W)
CONTROL SYS.	24VDC
MOTOR	115VAC, 1/2 HP

DRIVING MEANS	DIRECT-PLUNGER HYDRAULIC
PLUNGER (2X)	1.125" SOLID
CYL. I.D.	2.75" MASTER, 2.50" SLAVE
CYL. O.D.	3.13" MASTER, 2.88" SLAVE
STROKE (2X)	41.5"
SAFETIES TYPE	NONE (IAW ASME A18.1 §2.8.8)

WORKING PSI	400 PSI
RELIEF PSI	600 PSI (1.5 X WP)

DOOR LOCK	IDEC HSSL
------------------	-----------

CONFIGURATION: FINISHES

LIFT COLOR (POWDER COAT)	<input checked="" type="checkbox"/> BLACK (STANDARD) <input type="checkbox"/> SILVER <input type="checkbox"/> CUSTOM: _____
HARDWARE COLOR	<input checked="" type="checkbox"/> SILVER (STANDARD) <input type="checkbox"/> BLACK <input type="checkbox"/> BRASS <input type="checkbox"/> OIL RUBBED BRONZE
WINDOWS	<input checked="" type="checkbox"/> CLEAR PLEXIGLAS (STANDARD) <input type="checkbox"/> TINTED PLEXIGLAS (30%) <input type="checkbox"/> FROSTED PLEXIGLAS <input type="checkbox"/> POWDER COATED STEEL
WINDOW ART	<input checked="" type="checkbox"/> NONE (STANDARD) <input type="checkbox"/> CUSTOM LOGO/IMAGE

PROVISIONS BY OTHERS

GENERAL

HOISTWAY: FINISHED VERTICAL LANDING FACE MUST BE SQUARE AND PLUMB WITHIN 1/4" TO ENSURE PROPER LIFT OPERATION. WHERE ANY PERMANENT STRUCTURE IS WITHIN 12" OF EITHER SIDE OF THE LIFT, IT MUST BE DESIGNED AND BUILT IN ACCORDANCE WITH ASME A18.1 AND ALL APPLICABLE STATE AND LOCAL CODES.

FLOOR: FLOOR BENEATH UNIT AND DOOR SWINGS MUST BE FLAT AND LEVEL WITHIN 1/8" AND CAPABLE OF SUPPORTING UNIT WEIGHT WITH RATED LOAD. OUTDOORS, DRAINAGE SHALL NOT FLOW THROUGH OR INTO UNIT.

PIT/RAMP: UNLESS OTHERWISE SPECIFIED, DO NOT PROVIDE PIT OR RAMP. LIFT DESIGNED WITH LOW-PROFILE PLATFORM FLOOR FOR DIRECT ENTRY.

OVERHEAD CLEARANCE: MUST COMPLY WITH ALL APPLICABLE CODES.

ELECTRICAL

POWER: SINGLE PHASE AC. SEE CONFIGURATION TABLE FOR DETAILS.

LIGHTING: 54 LX MIN AT PLATFORM AND LANDINGS.

EMERGENCY LIGHTING: 2.2 LX MIN AT PLATFORM AND CONTROLS (4 HOURS MIN).

TRANSPORTABILITY FEATURES

REMOVABLE CASTERS: INCLUDED TO WHEEL LIFT BETWEEN STORAGE AND USE LOCATIONS. STORED IN LOCKED SIDE CABINET WHEN LIFT IS SET UP FOR USE.

COMPRESSIBILITY: LIFT COMPRESSIBLE TO 33" TO FIT THROUGH DOORWAYS.

D
C
B
A

D
C
B
A

REV	FSCM NO.	DWG. NO.	REV
D	08992	PROTEGE 5442P	E
SCALE	1/10	SHEET	3

8 7 6 5 4 3 2 1

4

3

2

1

NOTES UNLESS OTHERWISE SPECIFIED:

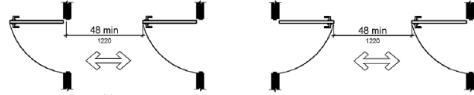
1. THIS DOCUMENT IS INTENDED TO ASSIST IN SITE PLANNING TO ENSURE REQUIRED CLEARANCES FOR LIFT AND REQUIRED ADA ENTRY CLEARANCES ARE PROVIDED.

2. ALL CLEARANCES SHOWN ARE THE **MINIMUM** CLEARANCES REQUIRED. OVERALL DIMENSIONS PROVIDED FOR MOST COMMONLY USED CONFIGURATION.

NOTE: FOR NON-DIMENSIONED CLEARANCES, THE DIFFERENCE IS PROVIDED IN PARENTHESIS. EX: (+6), (-18), ETC.

3. ONLY ONE OF THE ADA-REQUIRED ENTRY CLEARANCES SHOWN AT EACH LANDING MUST BE PROVIDED. MIRROR ENTRY CLEARANCE FOR OPPOSITE DOOR SWING. ENTRY CLEARANCE ALLOWED TO BE OFFSET UP TO 8" MAXIMUM FROM THE FACE OF THE DOOR (FOR WHEN DOOR IS RECESSED).

NOTE: ADDITIONAL CLEARANCE REQUIRED FOR DOORS IN SERIES: CLEARANCE OF 48" REQUIRED BETWEEN OPEN DOORS (SO EACH DOOR MAY BE NAVIGATED INDIVIDUALLY).

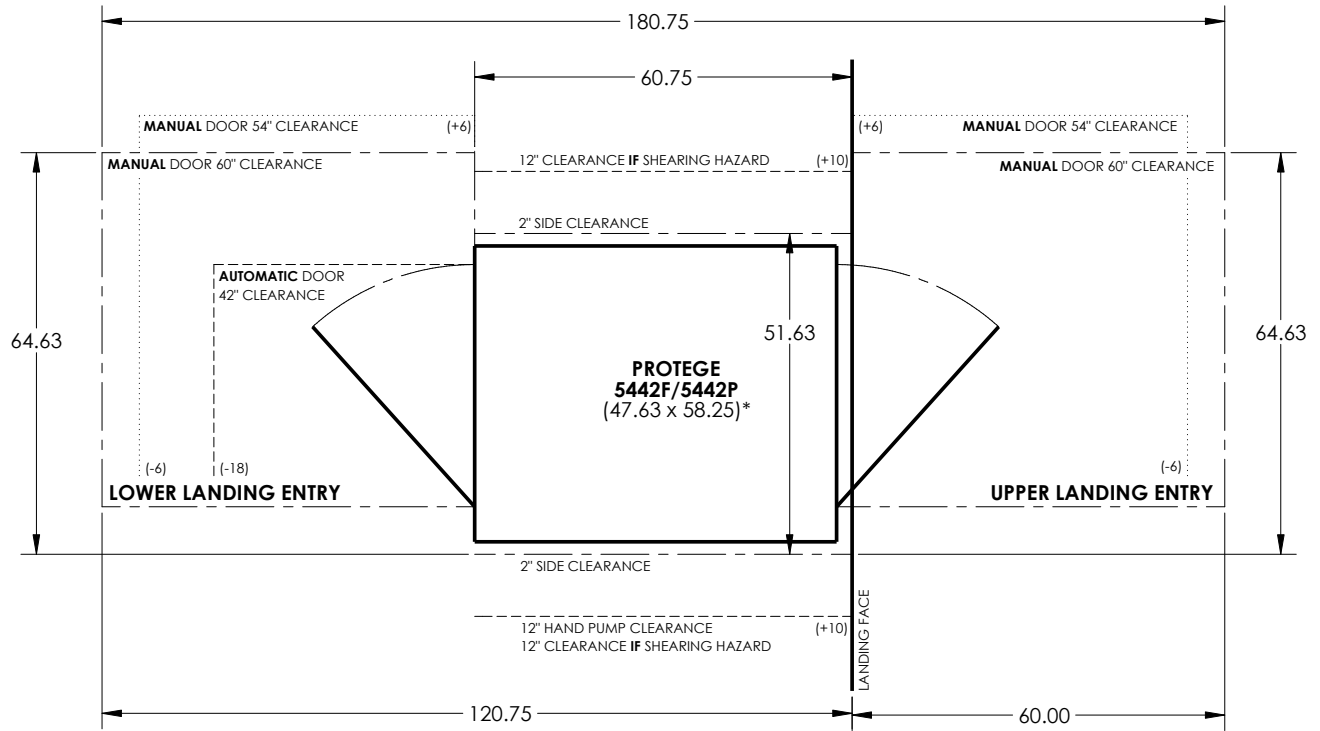


4. HAND PUMP CLEARANCE OPTIONAL. (MANUAL LOWERING PROVIDED BY FLV).

5. THE ONLY OBJECTS ALLOWED WITHIN 12" OF THE PLATFORM ARE SMOOTH, UNPERFORATED VERTICAL SURFACES WHICH DO NOT POSE SHEARING/CRUSHING HAZARDS. THIS APPLIES THROUGHOUT ENTIRE REQUIRED VERTICAL CLEARANCE (SEE NEXT NOTE).

6. REQUIRES OVERHEAD CLEARANCE OF 80" ABOVE PLATFORM FLOOR AT UPPER LANDING.

REVISIONS				
ZONE	LTR.	DESCRIPTION	DATE	APPROVAL



*AUTOMATIC DOOR OPERATOR INCREASES OVERALL LIFT WIDTH (AND REQUIRED WIDTH CLEARANCE) BY 0.69"

INTERPRET DIMENSIONS AND TOLERANCES IAW ANSI Y14.5M-1994 UNLESS OTHERWISE SPECIFIED DIMENSIONS ARE IN INCHES TOLERANCES: DECIMALS .XX ± N/A ANGLES ± N/A .XXX ± N/A				CONTRACT NO. DRAWN S.APPLEBY DATE 2-29-24 CHECK APPROVED By Philip Brobeck at 3:24 pm, Feb 29, 2024		CGM CONTAINER CONTROLS, INC. P.O. BOX 40020 - TUCSON, ARIZONA 85717-0020	
DO NOT SCALE DRAWING				TITLE REQUIRED CLEARANCES FOR PROTEGE 5442F/5442P			
PART DASH NO.		NEXT FINAL		NEXT ASSY.		USED ON	
QTY. REQ'D PER ASSY.		APPLICATION					
SIMILAR TO		ACT. WT.		CALC. WT.		FINISH	
MANUFACTURING				CUSTOMER			
SIZE B		FSCM NO. 08992		DWG. NO. PROTEGE 5442F CLEARANCES		REV. A	
SCALE 1/20		RELEASE DATE		SHEET 1 OF 1			

4

3

2

1