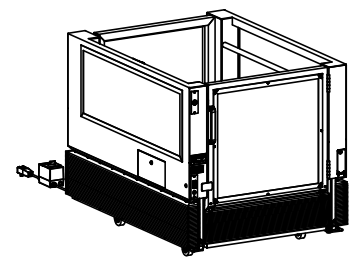


**FRONT VIEW**  
(LOWER LANDING)

**SIDE VIEW**

**BACK VIEW**  
(UPPER LANDING)



**ASCENSION VIRTUOSO 5460P VERTICAL PLATFORM WHEELCHAIR LIFT FOR RELOCATABLE LIFT APPLICATIONS**

PROJECT NAME, CITY, STATE:

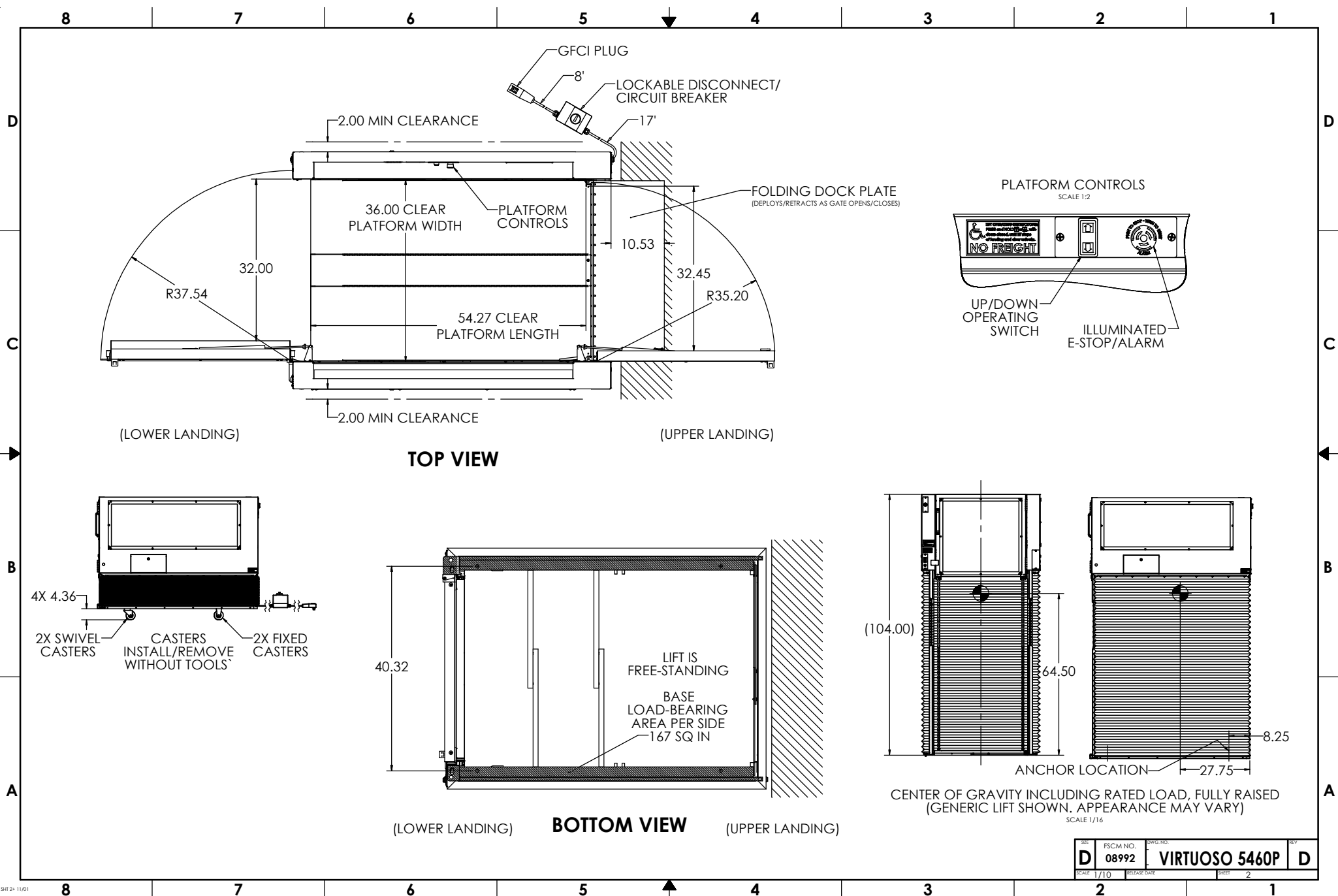
VIRTUOSO P/N:  
VIRTUOSO 5460P-1

<small>INTERPRET DIMENSIONS AND TOLERANCES IN ACCORDANCE WITH ASME Y14.5M-1994 UNLESS OTHERWISE SPECIFIED DIMENSIONS ARE IN INCHES (MM) TOLERANCES ANGLES</small> <small>DIGITALS 2014 .35 .1004 .13</small>		<small>DATE</small> 7/24/2024	<small>SCALE</small> 1/10	<small>RELEASE DATE</small> 7/29/2024	<small>REV</small> 1 OF 3
<small>DO NOT SCALE DRAWING</small>		<small>CHECKED</small> APPROVED By Philip Brobeck at 8:12 am, Jul 29, 2024	<small>SCALE</small> 1/10		
<small>DATE</small> 7/24/2024		<small>REV</small> 1 OF 3			
<small>DATE</small> 7/24/2024		<small>REV</small> 1 OF 3			



**VIRTUOSO 5460P**  
**RELOCATABLE PLATFORM LIFT**

FSCM NO. **08992** DWG. NO. **VIRTUOSO 5460P**



REV	FSCM NO.	DWG. NO.	REV
D	08992	VIRTUOSO 5460P	D
SCALE 1/10	RELEASE DATE	SHEET 2	

**CONFIGURATION**

TOTAL TRAVEL	UP TO 60.00"
ENTRY/EXIT CONFIG.	STRAIGHT THROUGH

<b>LOWER LANDING</b>	
DOOR TYPE	PLATFORM GATE
HANDING	LH
DOOR OPERATOR	NO
CALL STATION TYPE*	FRAME MOUNT
CALL STATION KEYED	NO

<b>UPPER LANDING</b>	
DOOR TYPE	PLATFORM GATE
HANDING	RH
DOOR OPERATOR	N/A
CALL STATION TYPE*	FRAME MOUNT
CALL STATION KEYED	NO

<b>PLATFORM</b>	
KEY SWITCH	NO
GRAB BAR	STANDARD
SLIP-RESISTANT FLOOR	STANDARD

<b>OUTDOORS</b>	
AUDIBLE ALARM	STANDARD
UNDER-PLATFORM SAFETY SKIRT	STANDARD
TILT SWITCH	STANDARD
ACCESS PANELS (4X)	STANDARD
HAND PUMP	STANDARD
FRONT LOWERING VALVE (FLV)	STANDARD

<b>ELECTRICAL POWER</b>	
PLUG TYPE	120VAC 60HZ 15A NEMA 5-15 (TYPICAL USA PLUG)
EXTERNAL BATTERY BACKUP UNIT (UPS)	NO
STANCHION PKG*	NO
STAGE GUARD**	NO
COMPRESSION/ EXPANSION TOOLKIT	NO
LIFT COVER	NO

\*OPTIONAL STANCHION PACKAGE KEEPS OPERATING SWITCHES WITHIN ADA REACH RANGE WHEN TRAVEL EXCEEDS 25 INCHES.  
 \*\*OPTIONAL STAGE GUARD ENSURES LIFT ALWAYS STANDS AT LEAST 6 INCHES ABOVE UPPER LANDING FOR RISES ABOVE 38 INCHES.

**SPECIFICATIONS**

DESCRIPTION	VERTICAL PLATFORM WHEELCHAIR LIFT
CODE COMPLIANCE	ASME A18.1, ASME A17.5, NFPA 70 (NEC), ANSI A117.1, ADASAD (ADAAG)
APPLIED VERSION	ASME A18.1-2020
MODEL	VIRTUOSO 5460P
UNIT WEIGHT	1050 LB
RATED LOAD	750 LB
RATED SPEED	7 FT/MIN
DUTY CYCLE S2:	20 MIN SINGLE RUN
PLATFORM SIZE	36" X 54.25"
POWER SUPPLY	24VDC, 2.5A (60W)
CONTROL SYS.	24VDC
MOTOR	115VAC, 1/2 HP

<b>DRIVING MEANS</b>	
PLUNGER (2X)	DIRECT-PLUNGER HYDRAULIC 1.125" SOLID
CYL. I.D.	2.75" MASTER, 2.50" SLAVE
CYL. O.D.	3.13" MASTER, 2.88" SLAVE
STROKE (2X)	40.5"
SAFETIES TYPE	NONE (IAW ASME A18.1 §2.8.8)

WORKING PSI	900 PSI MAX
RELIEF PSI	900 PSI

DOOR LOCK	LOWER: HYDRAULIC
-----------	------------------

**CONFIGURATION: FINISHES**

LIFT COLOR (POWDER COAT)	<input checked="" type="checkbox"/> BLACK (STANDARD) <input type="checkbox"/> SILVER <input type="checkbox"/> CUSTOM: _____
HARDWARE COLOR	<input checked="" type="checkbox"/> SILVER (STANDARD) <input type="checkbox"/> BLACK <input type="checkbox"/> BRASS <input type="checkbox"/> OIL RUBBED BRONZE
WINDOWS	<input checked="" type="checkbox"/> CLEAR PLEXIGLAS (STANDARD) <input type="checkbox"/> TINTED PLEXIGLAS (30%) <input type="checkbox"/> FROSTED PLEXIGLAS <input type="checkbox"/> POWDER COATED STEEL
WINDOW ART	<input checked="" type="checkbox"/> NONE (STANDARD) <input type="checkbox"/> CUSTOM LOGO/IMAGE

**PROVISIONS BY OTHERS**

**GENERAL**

**HOISTWAY:** FINISHED VERTICAL LANDING FACE MUST BE SQUARE AND PLUMB WITHIN 1/4" TO ENSURE PROPER LIFT OPERATION. WHERE ANY PERMANENT STRUCTURE IS WITHIN 12" OF EITHER SIDE OF THE LIFT, IT MUST BE DESIGNED AND BUILT IN ACCORDANCE WITH ASME A18.1 AND ALL APPLICABLE STATE AND LOCAL CODES.

**FLOOR:** FLOOR BENEATH UNIT AND DOOR SWINGS MUST BE FLAT AND LEVEL WITHIN 1/8" AND CAPABLE OF SUPPORTING UNIT WEIGHT WITH RATED LOAD. OUTDOORS, DRAINAGE SHALL NOT FLOW THROUGH OR INTO UNIT.

**PIT/RAMP:** UNLESS OTHERWISE SPECIFIED, DO NOT PROVIDE PIT OR RAMP. LIFT DESIGNED WITH LOW-PROFILE PLATFORM FLOOR FOR DIRECT ENTRY.

**OVERHEAD CLEARANCE:** MUST COMPLY WITH ALL APPLICABLE CODES.

**ELECTRICAL**

**POWER:** SINGLE PHASE AC. SEE CONFIGURATION TABLE FOR DETAILS.

**LIGHTING:** 54 LX MIN AT PLATFORM AND LANDINGS.

**EMERGENCY LIGHTING:** 2.2 LX MIN AT PLATFORM AND CONTROLS (4 HOURS MIN).

**TRANSPORTABILITY FEATURES**

**REMOVABLE CASTERS:** INCLUDED TO WHEEL LIFT BETWEEN STORAGE AND USE LOCATIONS. STORED IN INTERNAL BRACKETS WHEN LIFT IS SET UP FOR USE.

**COMPRESSIBILITY:** LIFT COMPRESSIBLE TO 33" TO FIT THROUGH DOORWAYS.

REV	FSCM NO.	DWG. NO.	REV
D	08992	VIRTUOSO 5460P	D
SCALE	1/10	SHEET	3

4

3

2

1

NOTES UNLESS OTHERWISE SPECIFIED:

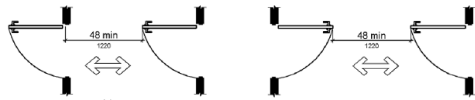
1. THIS DOCUMENT IS INTENDED TO ASSIST IN SITE PLANNING TO ENSURE REQUIRED CLEARANCES FOR LIFT AND REQUIRED ADA ENTRY CLEARANCES ARE PROVIDED.

2. ALL CLEARANCES SHOWN ARE THE **MINIMUM** CLEARANCES REQUIRED. OVERALL DIMENSIONS PROVIDED FOR MOST COMMONLY USED CONFIGURATION.

NOTE: FOR NON-DIMENSIONED CLEARANCES, THE DIFFERENCE IS PROVIDED IN PARENTHESIS. EX: (+6), (-18), ETC.

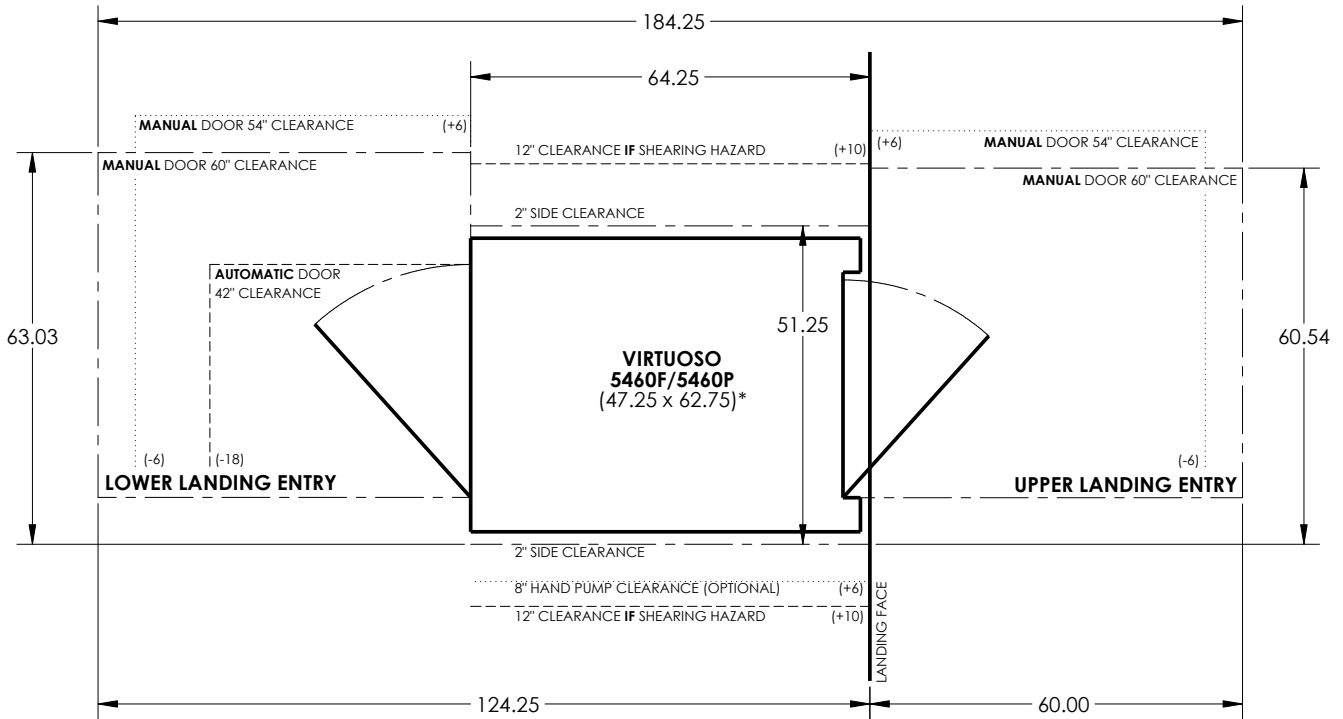
3. ONLY ONE OF THE ADA-REQUIRED ENTRY CLEARANCES SHOWN AT EACH LANDING MUST BE PROVIDED. MIRROR ENTRY CLEARANCE FOR OPPOSITE DOOR SWING. ENTRY CLEARANCE ALLOWED TO BE OFFSET UP TO 8" MAXIMUM FROM THE FACE OF THE DOOR (FOR WHEN DOOR IS RECESSED).

NOTE: ADDITIONAL CLEARANCE REQUIRED FOR DOORS IN SERIES; CLEARANCE OF 48" REQUIRED BETWEEN OPEN DOORS (SO EACH DOOR MAY BE NAVIGATED INDIVIDUALLY).



4. THE ONLY OBJECTS ALLOWED WITHIN 12" OF THE PLATFORM ARE SMOOTH, UNPERFORATED VERTICAL SURFACES WHICH DO NOT POSE SHEARING/CRUSHING HAZARDS. THIS APPLIES THROUGHOUT ENTIRE REQUIRED VERTICAL CLEARANCE (SEE NEXT NOTE).

5. REQUIRES OVERHEAD CLEARANCE OF 80" ABOVE PLATFORM FLOOR AT UPPER LANDING.



\*AUTOMATIC DOOR OPERATOR INCREASES OVERALL LIFT WIDTH (AND REQUIRED WIDTH CLEARANCE) BY 1.00"

				INTERPRET DIMENSIONS AND TOLERANCES IAW ANSI Y14.5M-1994		CONTRACT NO.		AGM CONTAINER CONTROLS, INC.			
				UNLESS OTHERWISE SPECIFIED DIMENSIONS ARE IN INCHES TOLERANCES:		DRAWN S.APPELBY DATE 12-16-22		P.O. BOX 40020 - TUCSON, ARIZONA 85717-0020			
				DECIMALS .XX ± N/A .XXX ± N/A		CHECK		TITLE REQUIRED CLEARANCES FOR VIRTUOSO 5460F/5460P			
				ANGLES ± N/A		APPROVED By Philip Brobeck at 10:00 am, Dec 16, 2022		SIZE B FSCM NO. 08992 DWG. NO. VIRTUOSO 5460F CLEARANCES REV. -			
				DO NOT SCALE DRAWING		MANUFACTURING		SCALE 1/20 RELEASE DATE SHEET 1 OF 1			
				FINISH		CUSTOMER					
PART DASH NO.	NEXT	FINAL	NEXT ASSY.	USED ON	SIMILAR TO	ACT. WT.	CALC. WT.				
QTY. REQ'D PER ASSY.			APPLICATION								

4

3

2

1