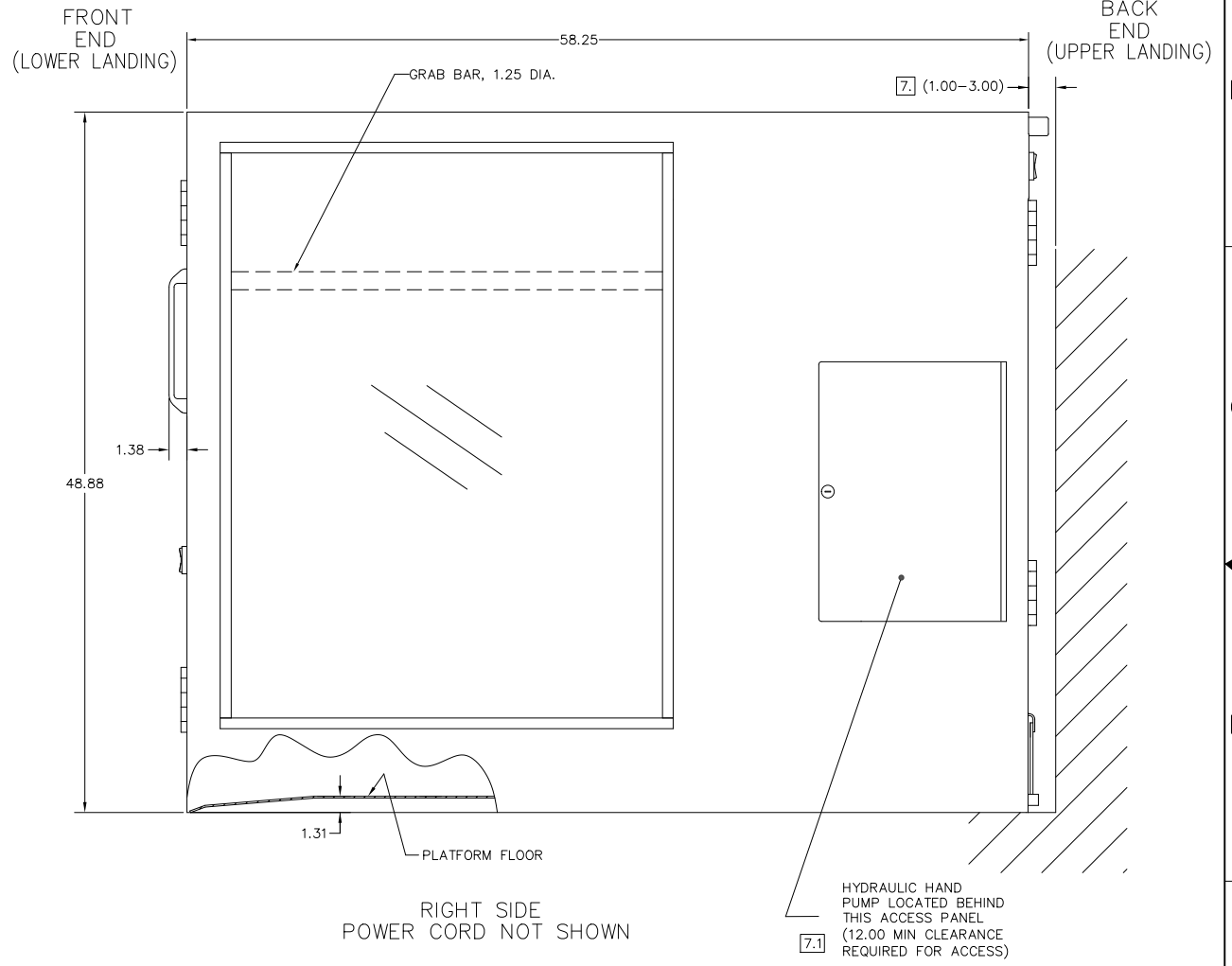


8 7 6 5 4 3 2 1

REVISIONS				
ZONE	LTR.	DESCRIPTION	DATE	APPROVED

NOTES UNLESS OTHERWISE SPECIFIED:

1. DESCRIPTION: PORTABLE WHEELCHAIR LIFT, MODEL PROTEGE 5442P.
 2. CHARACTERISTICS:
 - 2.1 WEIGHT: 850 POUNDS.
 - 2.2 MATERIALS:
 - 2.2.1 BASE, PLATFORM, GUIDE RAILS: STEEL.
 - 2.2.2 DOCK PLATE, SHEETMETAL AND SAFETY UNDERPAN: ALUMINUM ALLOY.
 - 2.2.3 WINDOWS: TRANSPARENT HIGH IMPACT THERMOPLASTIC.
 - 2.3 FINISH:
 - 2.3.1 BASE: HOT-DIP GALVANIZED.
 - 2.3.2 PLATFORM: POWDER COATED, COLOR BLACK (-1), OR OPTIONAL COLOR (-99).
 3. OPERATION:
 - 3.1 OCCUPANCY: (1) PERSON.
 - 3.2 MAXIMUM LOAD: 900 POUNDS.
 - 3.3 AVERAGE VERTICAL SPEED: 5 FEET PER MINUTE.
 - 3.4 VERTICAL TRAVEL: 4 TO 42 INCHES.
 4. FEATURES:
 - 4.1 OPERATING MECHANISM: DIRECT-PLUNGER HYDRAULIC.
 - 4.2 UNIT IS EQUIPPED WITH REMOVABLE WHEELS.
 - 4.3 UNIT IS EQUIPPED WITH MANUAL HAND PUMP FOR EMERGENCY OPERATION AND/OR WHEEL INSTALLATION.
 - 4.4 FRONT GATE INTERLOCK PREVENTS OPENING UNLESS PLATFORM IS AT LOWER LANDING.
 - 4.5 FRONT GATE INTERLOCK PREVENTS PLATFORM FROM MOVING MORE THAN 2 INCHES FROM LOWER LANDING UNLESS FRONT GATE IS LOCKED.
 - 4.6 GATE SENSORS PREVENT OPERATION UNLESS GATES ARE CLOSED.
 - 4.7 PLATFORM FLOOR AND DOCK PLATE SURFACES ARE SLIP-RESISTANT.
 - 4.8 DOCK PLATE IS TETHERED TO BACK GATE.
 - 4.9 UNIT IS EQUIPPED WITH EMERGENCY STOP BUTTON THAT, WHEN PRESSED, STOPS OPERATION OF THE LIFT AND SOUNDS AN ALARM.
 - 4.10 THE UNDERSIDE OF THE PLATFORM IS GUARDED BY A SAFETY PAN THAT STOPS OPERATION OF THE LIFT WHEN DOWNWARD MOVEMENT IS OBSTRUCTED.
 5. ELECTRICAL:
 - 5.1 120 VAC, 60 HZ, SINGLE PHASE, 15 AMP.
 - 5.2 20' LONG POWER CORD WITH STANDARD (3) PRONG GROUNDED PLUG, GROUND FAULT CIRCUIT INTERRUPTER (GFCI), AND LOCKABLE DISCONNECT SWITCH.
 - 5.3 ALL CONTROL CIRCUITS POWERED BY 24 VDC POWER SUPPLY.
 6. UNIT MEETS APPLICABLE REQUIREMENTS OF ASME A18.1, ASME A17.5, NFPA 70 (NEC), ANSI A117.1, AND ADASAD (ADAAG), AS THEY WOULD APPLY TO A PORTABLE LIFTING DEVICE.
- [7.1] RECOMMENDED CLEARANCES (FOR COMPLIANCE WITH ASME A18.1-2017 OR NEWER):
- [7.1] WHERE STANDBY POWER OR BATTERY BACKUP IS NOT PROVIDED, 12.00" MINIMUM CLEARANCE FOR HAND PUMP ACCESS SHOULD BE PROVIDED.
- 7.2 WHERE AN OBSTRUCTION OR SURFACE LOCATED WITHIN 12" OF PLATFORM PRESENTS A PINCHING, SHEARING, OR CRUSHING HAZARD, A SMOOTH CONTINUOUS SURFACE SHOULD BE PROVIDED EXTENDING FROM THE LOWER LANDING TO 42" MINIMUM ABOVE UPPER LANDING.
- 7.3 MANUEVERING CLEARANCES IAW ADAAG SHOULD BE PROVIDED AT EACH LANDING FOR BOTH ENTRANCES TO THE LIFT.

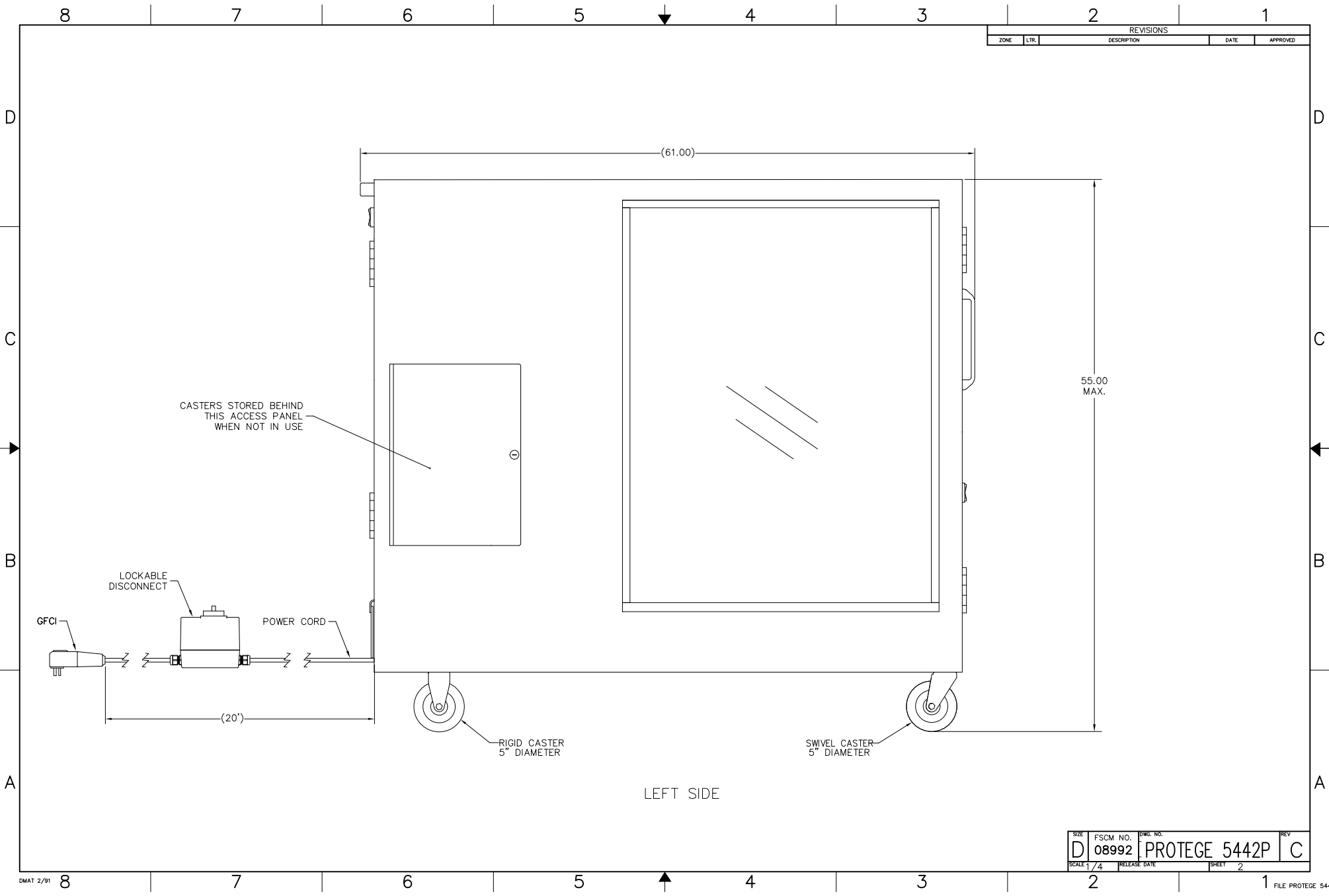


D
C
B
A

PART NO.	COLOR
PROTEGE 5442P-1	BLACK
PROTEGE 5442P-99	OPTIONAL

INTERPRET DIMENSIONS AND TOLERANCES IAW ASME Y14.5M-1992 UNLESS OTHERWISE SPECIFIED DIMENSIONS ARE IN INCHES DECIMALS: XX .X25 .XXX .030 ANGLES: 0.5° TOLERANCES:		CONTRACT DATE DRAWN BY: S. APPLEBY DATE: 3-9-2021 CHECKED BY: [APPROVED] (By Philip Brobeck at 1:38 pm, Mar 10, 2021)	CGM CONTAINER CONTROLS, INC. P.O. BOX 40020 - TUCSON, ARIZONA 85717-0020 PORTABLE WHEELCHAIR LIFT ASSEMBLY
DO NOT SCALE DRAWING FINISH: 2.3		MANUFACTURING: [] CUSTOMER: []	SIZE: D FSCM NO.: 08992 DWG. NO.: PROTEGE 5442P SCALE: 1/4" = 1'-0" RELEASE DATE: [] SHEET: 1 OF 4
PART NO. QTY. REQD PER ASSY.	NEXT FINAL QTY. REQD PER ASSY.	NEXT ASSY. USED ON APPLICATION	SIMILAR TO ACT. WT. CALC. WT.

REVISIONS				
ZONE	LTR.	DESCRIPTION	DATE	APPROVED



CASTERS STORED BEHIND THIS ACCESS PANEL WHEN NOT IN USE

LOCKABLE DISCONNECT

GFCI

POWER CORD

(20')

RIGID CASTER
5" DIAMETER

SWIVEL CASTER
5" DIAMETER

LEFT SIDE

SIZE D	FSCM NO. 08992	DWG. NO. PROTEGE 5442P	REV C
SCALE 1/4	RELEASE DATE	SHEET 2	1

8 7 6 5 4 3 2 1

REVISIONS				
ZONE	LTR.	DESCRIPTION	DATE	APPROVED

D
C
B
A

D
C
B
A

OPERATING SWITCH

OPERATING SWITCH

45.00

17.75

47.63

(2.00 MIN CLEARANCE) [7]

[7] (2.00 MIN CLEARANCE)

[7.1] (12.00 MIN FOR HAND PUMP ACCESS)

FRONT END

BACK END
POWER CORD NOT SHOWN

SIZE D	FSCM NO. 08992	DWG. NO. PROTEGE 5442P	REV C
SCALE 1/4	RELEASE DATE	SHEET 3	FILE PROTEGE 5442P

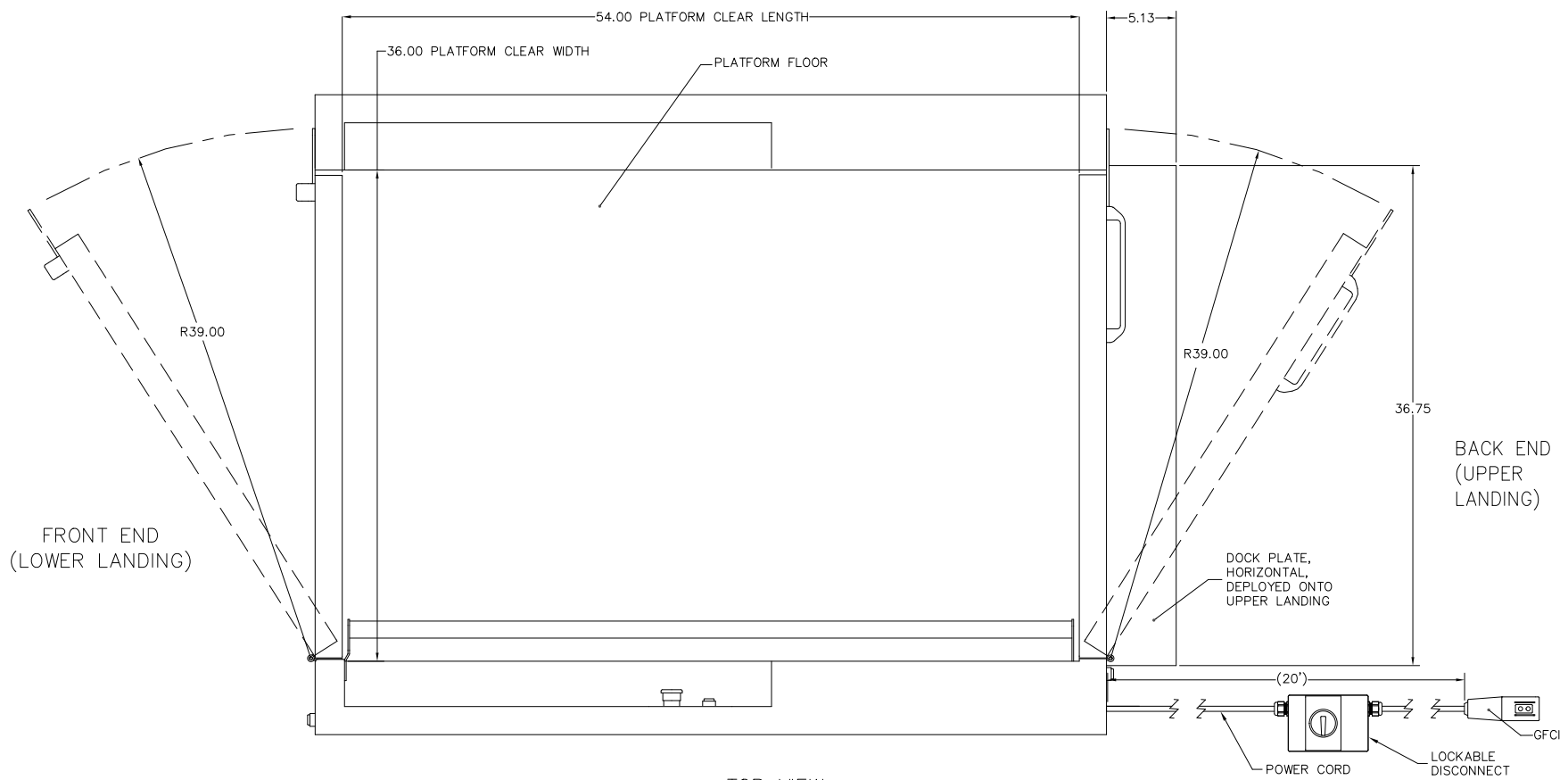
DMAT 2/91 8 7 6 5 4 3 2 1

8 7 6 5 4 3 2 1

REVISIONS				
ZONE	LTR.	DESCRIPTION	DATE	APPROVED

D
C
B
A

D
C
B
A



TOP VIEW

SIZE D	FSCM NO. 08992	DWG. NO. PROTEGE 5442P	REV C
SCALE 1/4	RELEASE DATE	SHEET 4	FILE PROTEGE 5442P

DMAT 2/91 8 7 6 5 4 3 2 1